

| | | |
|-------------|----------|-------------|
| APP CRS | Rwy Idg | 3803 |
| 280° | TDZE | 422 |
| | Apt Elev | 424 |

RNAV (GPS) RWY 28

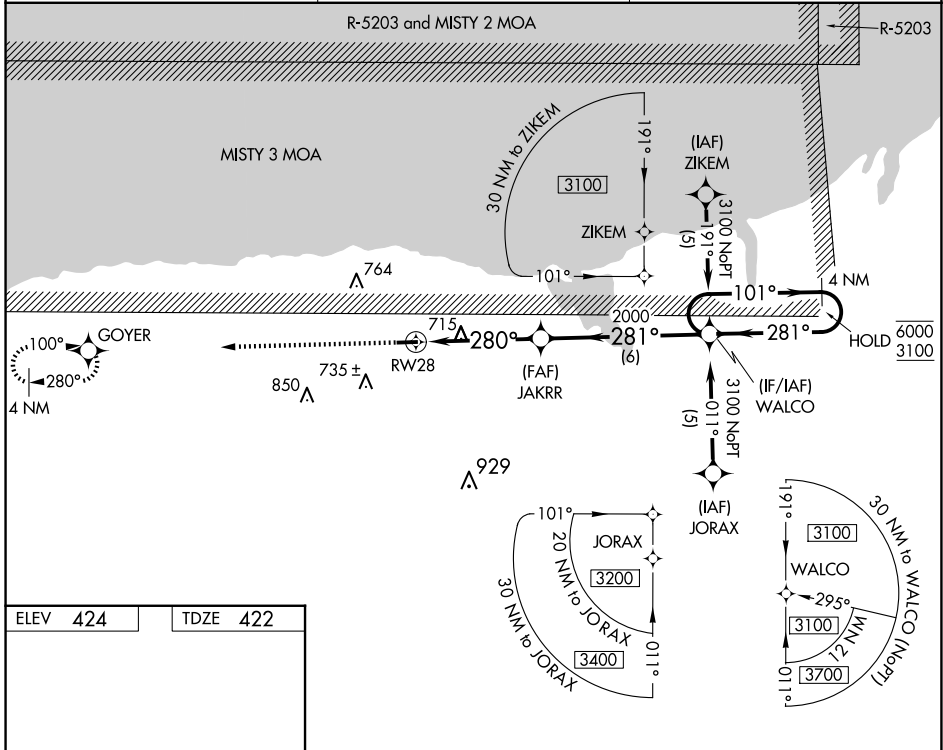
WILLIAMSON/SODUS (SDC)

RNP APCH - GPS.

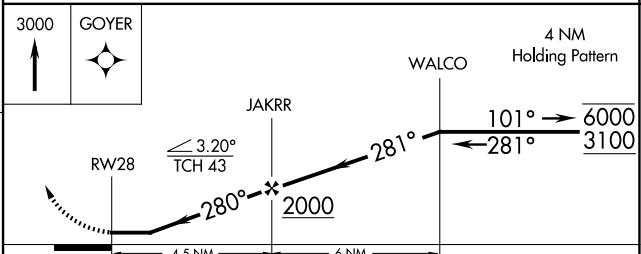
Procedure NA at night. Rwy 28 helicopter visibility reduction below 1 SM NA. When local altimeter setting not received, use Rochester altimeter setting and increase all MDAs 80 feet and LNAV visibility Cat C 1/8 SM, and Circling visibility Cat C 1/4 SM.

MISSED APPROACH:
Climb to 3000 direct GOYER and hold.

| | | |
|------------------------|--|---------------------------------|
| AWOS-3 124.2 | ROCHESTER APP CON 119.55 269.6 | UNICOM 122.8 (CTAF) 0 |
|------------------------|--|---------------------------------|



| | |
|--|----------|
| ELEV 424 | TDZE 422 |
| | |
| MIRL Rwy 10-28 0 REIL Rws 10 and 28 0 | |



| CATEGORY | A | B | C | D |
|-------------------|-----------------------|-----------------------|------------------------------|----|
| LNAV MDA | 980-1 | 558 (600-1) | 980-1 5/8 558 (600-1 5/8) | NA |
| C CIRCLING | 1000-1 576 (600-1) | 1020-1 596 (600-1) | 1120-2 696 (700-2) | NA |

NE-2, 20 FEB 2025 to 20 MAR 2025

NE-2, 20 FEB 2025 to 20 MAR 2025