

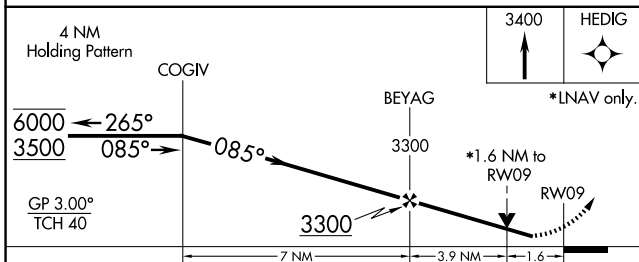
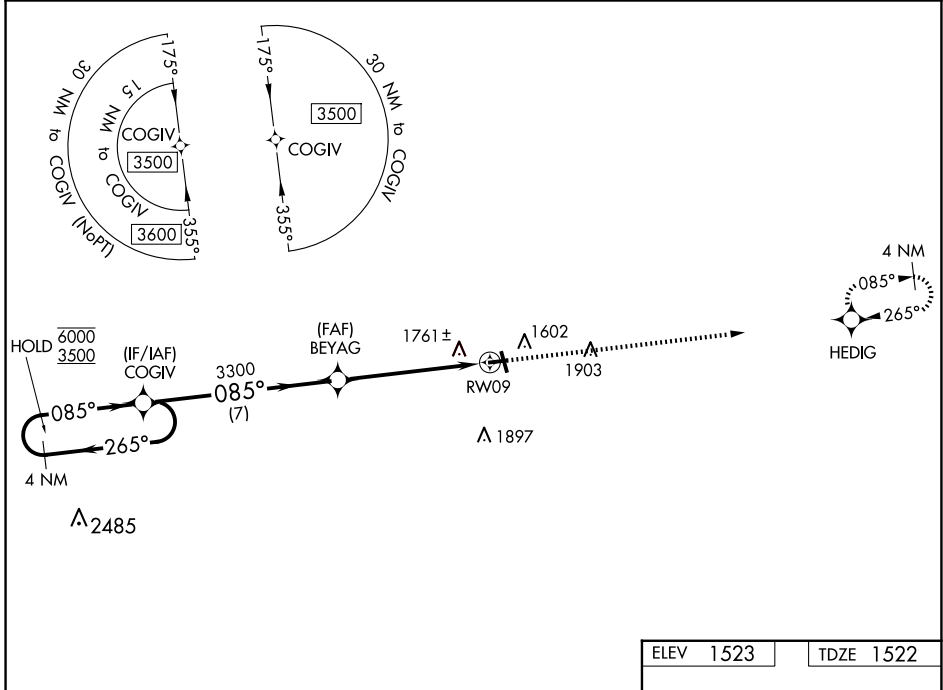
WAAS CH <b>82130</b> <b>W09A</b>	APP CRS <b>085°</b>	Rwy Idg <b>3400</b> TDZE <b>1522</b> Apt Elev <b>1523</b>
--	------------------------	---

# RNAV (GPS) RWY 9

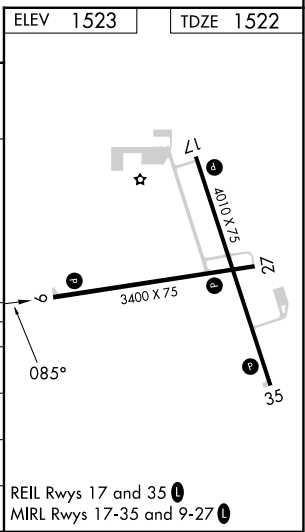
LANGLADE COUNTY (AIG)

RNP APCH.	MISSED APPROACH: Climb to 3400 direct HEDIG and hold.
<b>⚠</b> Rwy 9 helicopter visibility reduction below 3/4 SM NA. <b>⚠</b> For uncompensated Baro-VNAV systems, LNAV/VNAV NA below -18C or above 54°C.	

AWOS-3 <b>119.075</b>	MINNEAPOLIS CENTER <b>124.4 317.7</b>	UNICOM <b>122.8 (CTAF) 0</b>
--------------------------	--	---------------------------------



CATEGORY	A	B	C	D
LPV DA	1772-1		250 (300-1)	
LNAV/VNAV DA	2135-2 1/4		613 (700-2 1/4)	
LNAV MDA	2080-1 558 (600-1)		2080-1 5/8 558 (600-1 5/8)	
<b>C</b> CIRCLING	2120-1 597 (600-1)		2260-2 737 (800-2) 2260-2 1/4 737 (800-2 1/4)	



EC-3, 20 FEB 2025 to 20 MAR 2025

EC-3, 20 FEB 2025 to 20 MAR 2025