

WAAS CH <b>45740</b> <b>W32A</b>	APP CRS <b>320°</b>	Rwy Idg TDZE Apt Elev	<b>5000</b> <b>67</b> <b>67</b>
--	------------------------	-----------------------------	---------------------------------------

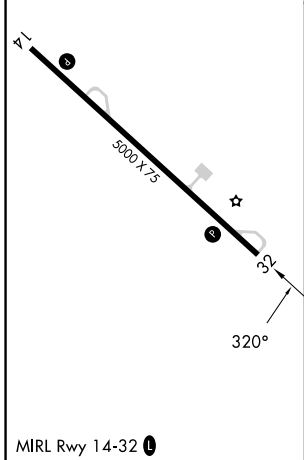
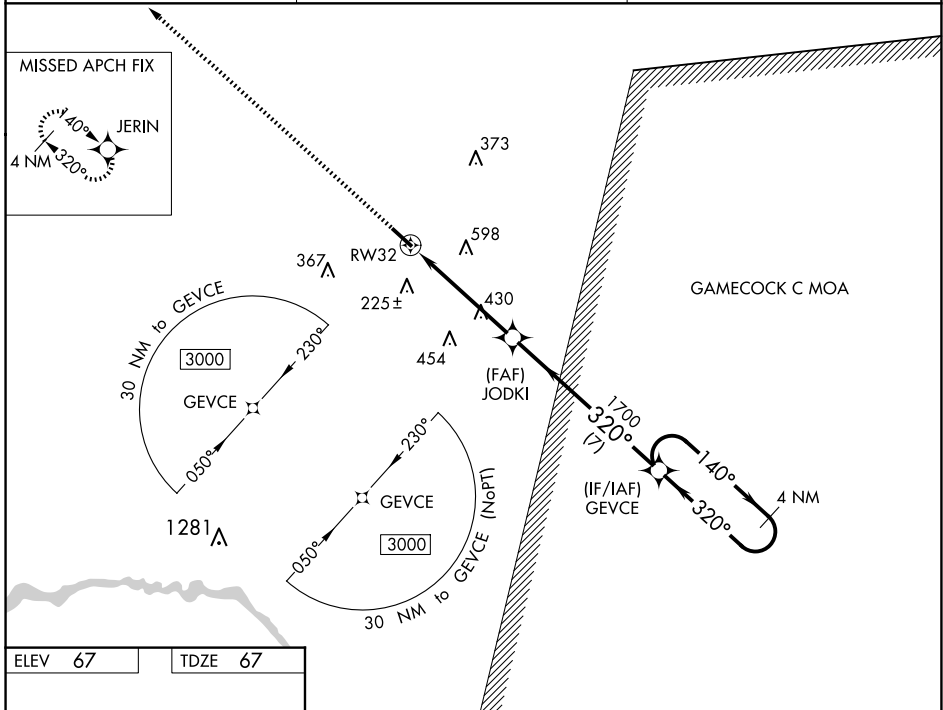
# RNAV (GPS) RWY 32

WILLIAMSBURG RGNL (CKI)

**⚠** For uncompensated Baro-VNAV systems, LNAV/VNAV NA below -1.5°C (5°F) or above 54°C (130°F). Baro-VNAV and VDP NA when using Florence Rgnl altimeter setting. Rwy 32 helicopter visibility reduction below 3/4 SM NA. DME/DME RNP-0.3 NA.

MISSED APPROACH: Climb to 3000 direct JERIN and hold.

AWOS-3 <b>124.775</b>	MYRTLE BEACH APP CON ★ <b>127.4 257.95</b>	UNICOM <b>122.7</b> (CTAF) <b>📻</b>
--------------------------	---	--



ELEV 67	TDZE 67			
3000	JERIN			
*LNAV only	GEVCE 4 NM Holding Pattern			
RW32	JODKI 1700			
*1.8 NM to RW32	1700			
1700	320°			
1700	140°			
320°	3000			
GP 3.00°	TCH 45			
1.8 NM	3.2 NM			
7 NM				
CATEGORY	A	B	C	D
LPV DA	317-7/8		250 (300-7/8)	
LNAV/VNAV DA	334-7/8		267 (300-7/8)	
LNAV MDA	680-1	613 (700-1)	680-1 3/4	613 (700-1 3/4)
<b>C</b> CIRCLING	680-1	613 (700-1)	960-2 3/4 893 (900-2 3/4)	960-3 893 (900-3)

SE-2, 20 FEB 2025 to 20 MAR 2025

SE-2, 20 FEB 2025 to 20 MAR 2025