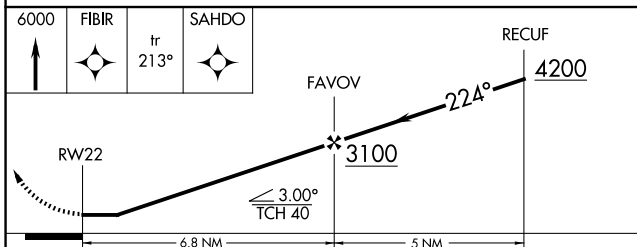
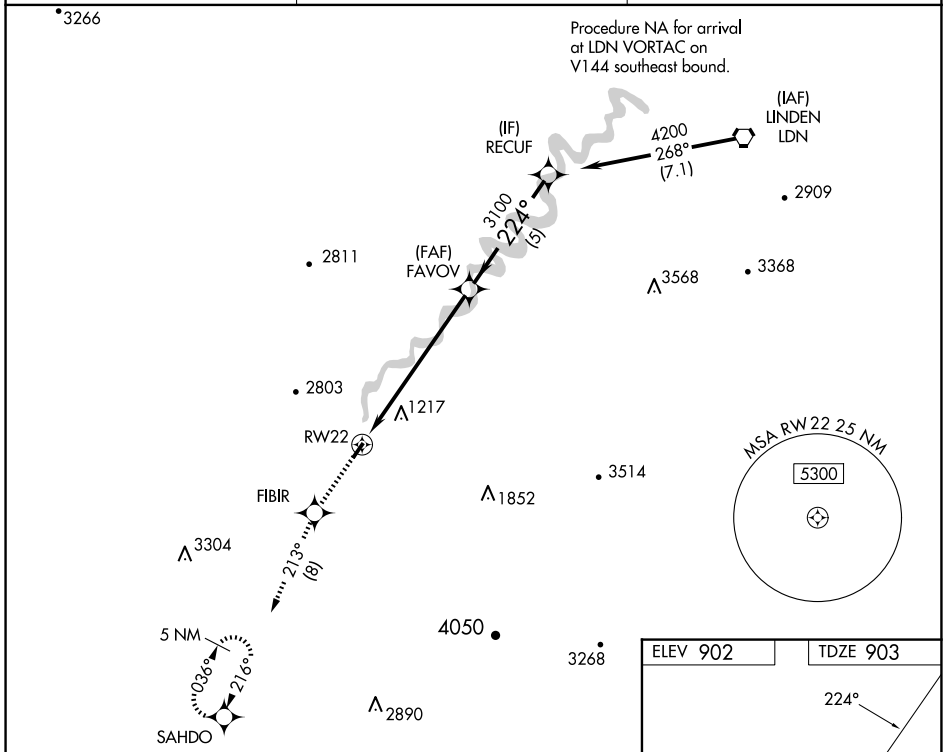


WAAS CH <b>77627</b> <b>W22A</b>	APP CRS <b>224°</b>	Rwy Idg TDZE Apt Elev	<b>3126</b> <b>903</b> <b>902</b>
--	------------------------	-----------------------------	---

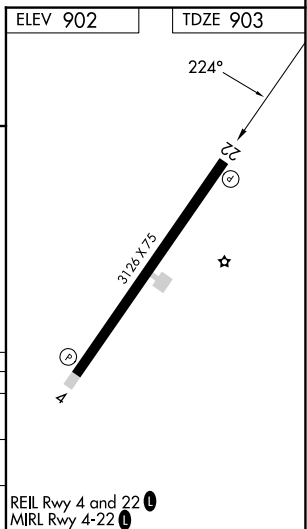
# RNAV (GPS) RWY 22

LURAY CAVERNS (LUA)

<p><b>▼</b> DME/DME RNP-0.3 NA. Helicopter visibility reduction below <math>\frac{3}{4}</math> SM NA. When local altimeter setting not received, use Staunton/Waynesboro/Harrisonburg altimeter setting and increase all MDA 120 feet; increase LNAV Cat B and Circling Cat B visibility <math>\frac{1}{4}</math> mile.</p>	<p><b>▲</b> MISSED APPROACH: Climb to 6000 direct FIBIR and on track 213° to SAHDO and hold, continue climb-in-hold to 6000.</p>	
<p>AWOS-3 <b>118.275</b></p>	<p>WASHINGTON CENTER <b>133.2 282.2</b></p>	<p>UNICOM <b>122.8 (CTAF) 0</b></p>



CATEGORY	A	B	C	D
LP MDA	1460-1	557 (600-1)	NA	NA
LNAV MDA	1820-1 $\frac{1}{4}$	917 (1000-1 $\frac{1}{4}$ )	NA	NA
CIRCLING	1820-1 $\frac{1}{4}$	918 (1000-1 $\frac{1}{4}$ )	NA	NA



REIL Rwy 4 and 22 **0**  
MIRL Rwy 4-22 **0**

NE-3, 20 FEB 2025 to 20 MAR 2025

NE-3, 20 FEB 2025 to 20 MAR 2025