

APP CRS 249°	Rwy Idg 3503
	TDZE 1160
	Apt Elev 1160

RNAV (GPS) RWY 25

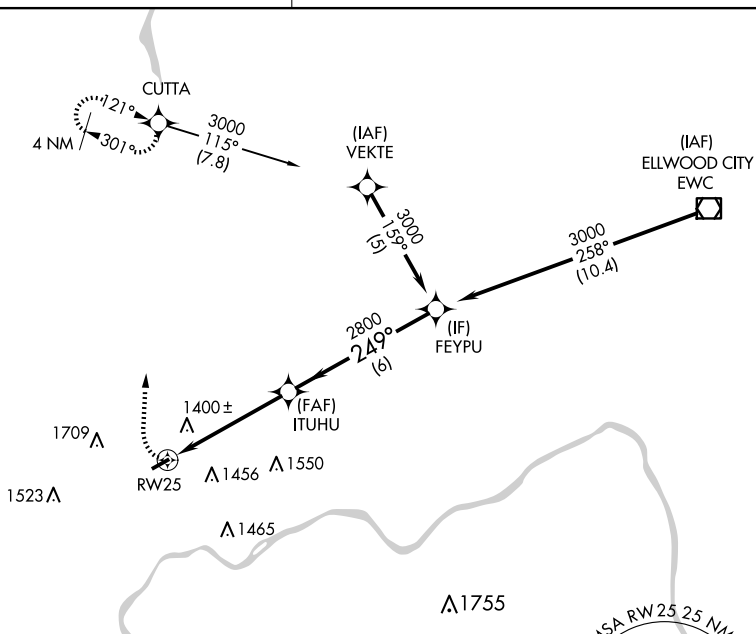
COLUMBIANA COUNTY (Ø2G)

NA DME/DME RNP-0.3 NA. Use Pittsburgh Intl altimeter setting, when not received use Wheeling, WV altimeter setting and increase all MDA 20 feet; increase LNAV Cat C visibility ¼ SM, and Circling Cat A visibility ¼ SM. Rwy 25 helicopter visibility reduction below ¾ SM NA.

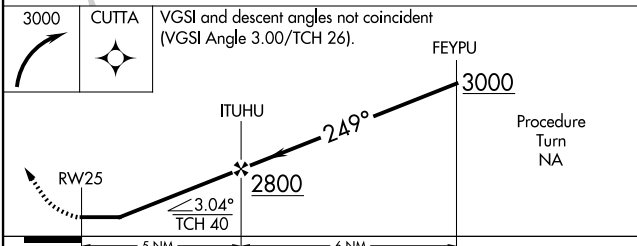
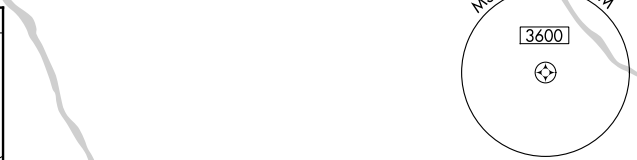
MISSED APPROACH: Climbing right turn to 3000 direct CUTTA and hold.

PITTSBURGH APP CON
124.75 338.2

UNICOM
123.0 (CTAF) Ø



ELEV 1160	TDZE 1160
-----------	-----------



CATEGORY	A	B	C	D
LNAV MDA	1760-1	600 (600-1)	1760-1½ 600 (600-1½)	NA
CIRCLING	1960-1 800 (800-1)	1960-1¼ 800 (800-1¼)	2080-2¾ 920 (1000-2¾)	NA

REIL Rwy 7-25 **Ø**
MIRL Rwy 7-25 **Ø**

EC-2, 20 FEB 2025 to 20 MAR 2025

EC-2, 20 FEB 2025 to 20 MAR 2025