

WAAS CH <b>62939</b> <b>W31B</b>	APP CRS <b>320°</b>	Rwy Idg TDZE <b>5289</b> Apt Elev <b>5320</b>	<b>6631</b>
--	------------------------	---	-------------

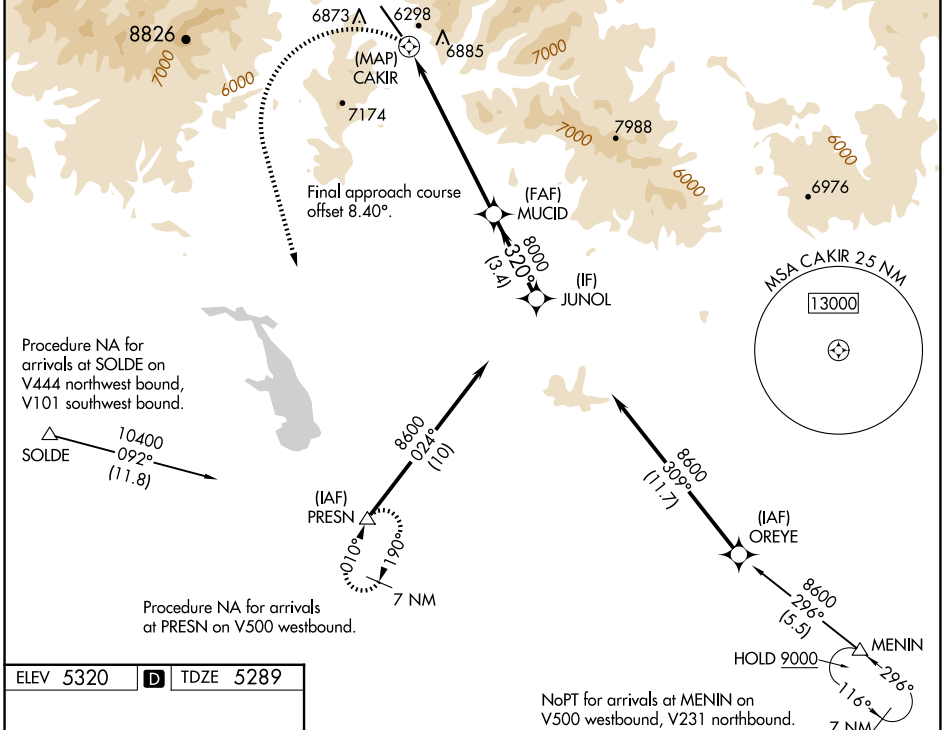
# RNAV (GPS) Y RWY 31

FRIEDMAN MEML (SUN)

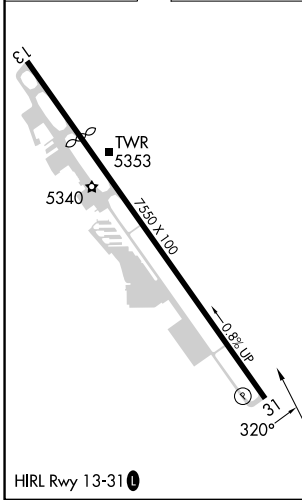
**⚠** Circling NA northeast of Rwy 13-31.  
**⚠** DME/DME RNP-0.3 NA. Rwy 31 helicopter visibility reduction below 1 SM NA.  
**⚠** -14°C

MISSED APPROACH: (Do not exceed 185 KIAS until PRESN) Climbing left turn to 8700 direct PRESN and hold. \*Missed approach requires minimum climb of 410 feet per NM to 7600.

ATIS <b>128.225</b>	SALT LAKE CENTER <b>118.05 363.0</b>	HAILEY TOWER* <b>125.6 (CTAF) 0</b>	GND CON <b>121.7</b>	UNICOM <b>122.95</b>
------------------------	---	--	-------------------------	-------------------------



ELEV 5320	<b>D</b>	TDZE 5289
-----------	----------	-----------



8700	PRESN	MUCID	JUNOL
△			
CAKIR	MUCID → JUNOL		
	320°	8600	
	8000		
0.5 NM	6.7 NM	3.4 NM	
≤ 3.50°	TCH 55		
CATEGORY	A	B	C
LP MDA*	6900-1¼ 1611 (1600-1¼)	6900-1½ 1611 (1600-1½)	6900-3 1611 (1600-3)
LP MDA	7220-1¼ 1931 (1900-1¼)	7220-1½ 1931 (1900-1½)	7220-3 1931 (1900-3)
LNAV MDA*	7100-1¼ 1811 (1800-1¼)	7100-1½ 1811 (1800-1½)	7100-3 1811 (1800-3)
LNAV MDA	7340-1¼ 2051 (2100-1¼)	7340-1½ 2051 (2100-1½)	7340-3 2051 (2100-3)
<b>C</b> CIRCLING	7340-1¼ 2020 (2100-1¼)	7360-1½ 2040 (2100-1½)	7580-3 7940-3 2260 (2300-3) 2620 (2700-3)

NW-1, 20 FEB 2025 to 20 MAR 2025

NW-1, 20 FEB 2025 to 20 MAR 2025