

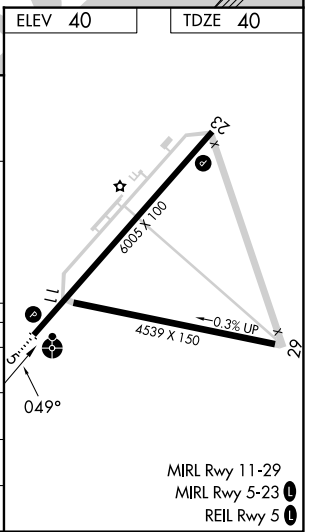
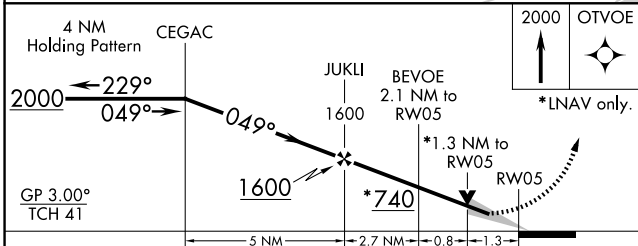
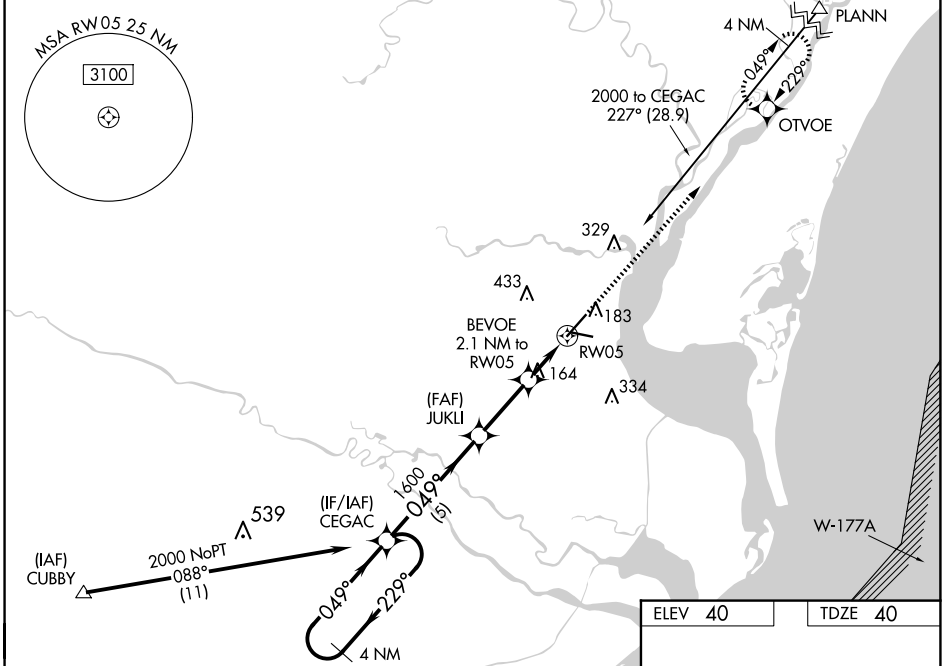
WAAS CH 97635 W05A	APP CRS 049°	Rwy Idg TDZE Apt Elev	6005 40 40
--	------------------------	-----------------------------	---------------------------------------

RNAV (GPS) RWY 5

GEORGETOWN COUNTY (GGE)

RNP APCH.		ODALS	MISSED APPROACH: Climb to 2000 direct OTVOE and hold.
<p>⚠ For uncompensated Baro-VNAV systems, LNAV/VNAV NA below -15°C or above 54°C. Rwy 5 helicopter visibility reduction below ¾ SM NA. For inop ALS, increase LNAV/VNAV visibility Cats A/B to ¾ SM. Inop table does not apply to LPV all Cats. Circling Rwy 11, 29 NA at night.</p>			

AWOS-3 118.275	MYRTLE BEACH APP CON ★ 127.4 257.95	GCO 121.725	UNICOM 123.0 (CTAF)
--------------------------	---	-----------------------	-------------------------------



CATEGORY	A	B	C	D
LPV DA		290-¾	250 (300-¾)	
LNAV/VNAV DA		304-¾	264 (300-¾)	
LNAV MDA	480-¾	440 (500-¾)	480-1⅞	440 (500-1⅞)
CIRCLING	500-1	520-1	740-2	740-2¼
	460 (500-1)	480 (500-1)	700 (700-2)	700 (700-2¼)

SE-2, 20 FEB 2025 to 20 MAR 2025

SE-2, 20 FEB 2025 to 20 MAR 2025