

|                                 |                        |                             |   |
|---------------------------------|------------------------|-----------------------------|---|
| WAAS<br>CH <b>86230</b><br>W26A | APP CRS<br><b>261°</b> | Rwy Idg<br>TDZE<br>Apt Elev | <b>4601</b><br><b>836</b><br><b>836</b> |
|---------------------------------|------------------------|-----------------------------|---|

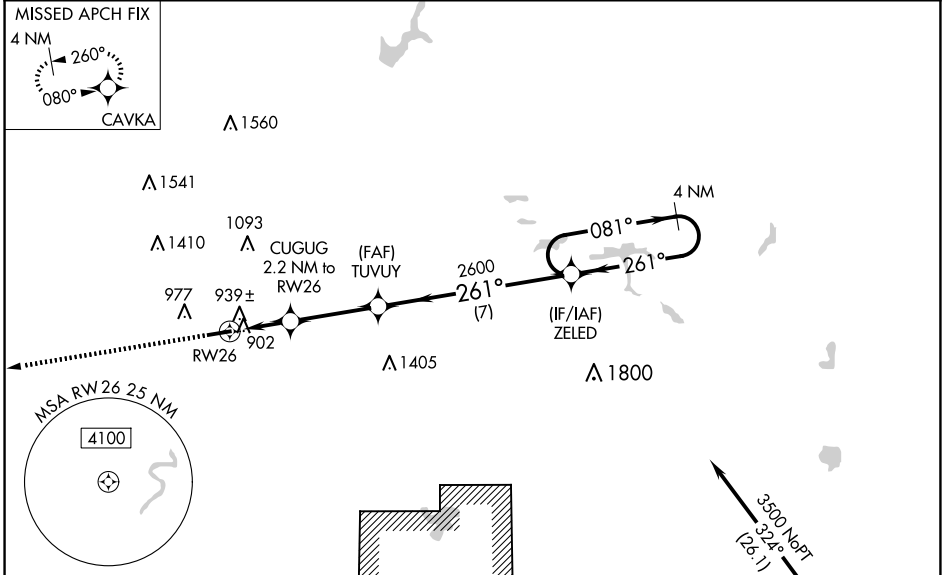
# RNAV (GPS) RWY 26

BLACK RIVER FALLS AREA (BCK)

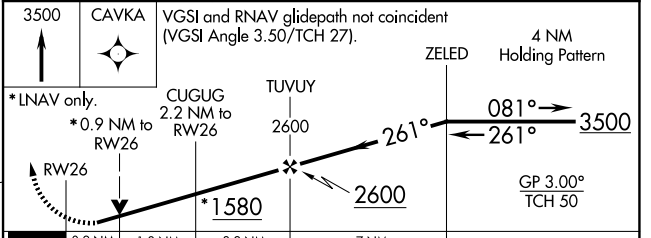
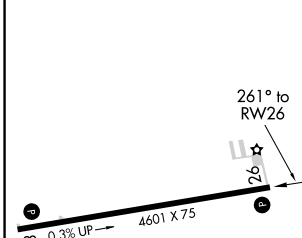
**⚠** For uncompensated Baro-VNAV systems, LNAV/VNAV NA below -16°C (4°F) or above 38°C (100°F). Baro-VNAV and VDP NA when using La Crosse altimeter setting. Rwy 26 helicopter visibility reduction below 3/4 SM NA. DME/DME RNP-0.3 NA. When local altimeter setting not received, use La Crosse altimeter setting: increase LPV DA to 1178 feet and visibility all Cats 1/8 SM; increase LNAV/VNAV DA to 1211 feet and visibility all Cats 1/4 SM; increase all MDA 100 feet and visibility LNAV Cat C and D 3/8 SM and Circling Cat C 1/4 SM.

MISSED APPROACH: Climb to 3500 direct CAVKA and hold.

|                            |  |                      |
|----------------------------|--|----------------------|
| AWOS-3PT<br><b>119.125</b> | MINNEAPOLIS CENTER<br><b>128.6 363.0</b> | CTAF<br><b>122.9</b> |
|----------------------------|--|----------------------|



|      |     |      |     |
|------|-----|------|-----|
| ELEV | 836 | TDZE | 836 |
|------|-----|------|-----|



| CATEGORY     | A           | B           | C           | D            |
|--------------|-------------|-------------|-------------|--------------|
| LPV DA       |             | 1087-1      | 251 (300-1) |              |
| LNAV/VNAV DA |             | 1120-1      | 284 (300-1) |              |
| LNAV MDA     |             | 1200-1      | 364 (400-1) |              |
| CIRCLING     | 1280-1      | 1380-1      | 1520-2      | 1760-3       |
|              | 444 (500-1) | 544 (600-1) | 684 (700-2) | 924 (1000-3) |

EC-3, 20 FEB 2025 to 20 MAR 2025

EC-3, 20 FEB 2025 to 20 MAR 2025