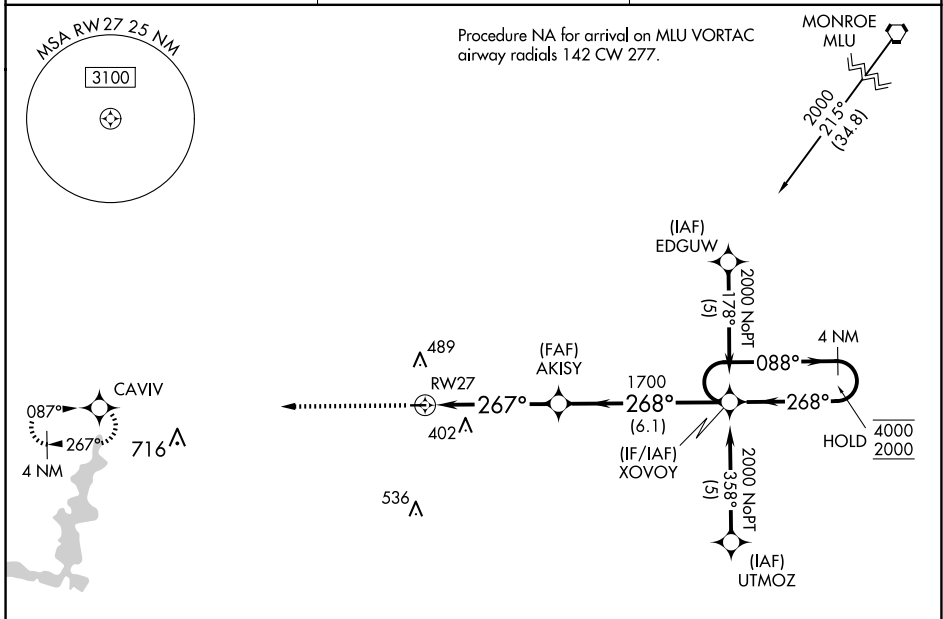


APP CRS 267°	Rwy Idg 3002
	TDZE 146
	Apt Elev 146

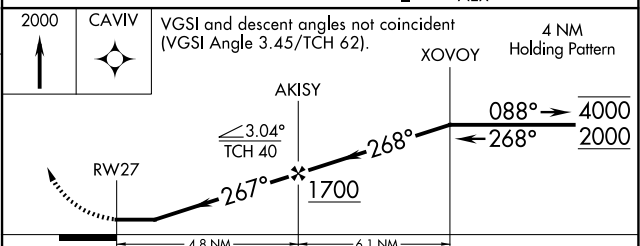
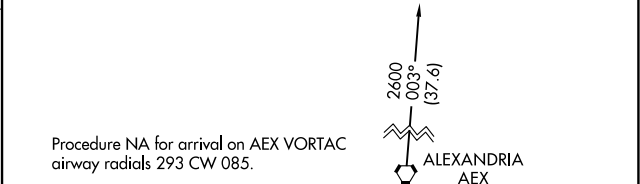
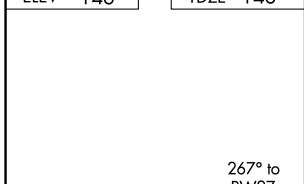
RNAV (GPS) RWY 27

DAVID G JOYCE (ØR5)

RNP APCH - GPS.		MISSED APPROACH: Climb to 2000 direct CAVIV and hold.
<p>▽ Rwy 27 helicopter visibility reduction below 1 SM NA. Use Alexandria Intl altimeter setting, when not received use Esler Rgnl altimeter setting. Procedure NA at night.</p> <p>△ NA</p>		
AEX ASOS 123.975	POLK APP CON 125.4 302.2	UNICOM 122.7 (CTAF) 0



ELEV 146	TDZE 146
-----------------	-----------------



MIRL Rwy 9-27 0	REIL Rwy 9 and 27 0
CATEGORY	A B C D
LNAV MDA	740-1 594 (600-1) NA

SC-4, 20 FEB 2025 to 20 MAR 2025

SC-4, 20 FEB 2025 to 20 MAR 2025