

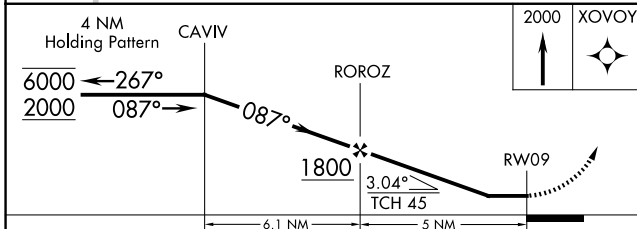
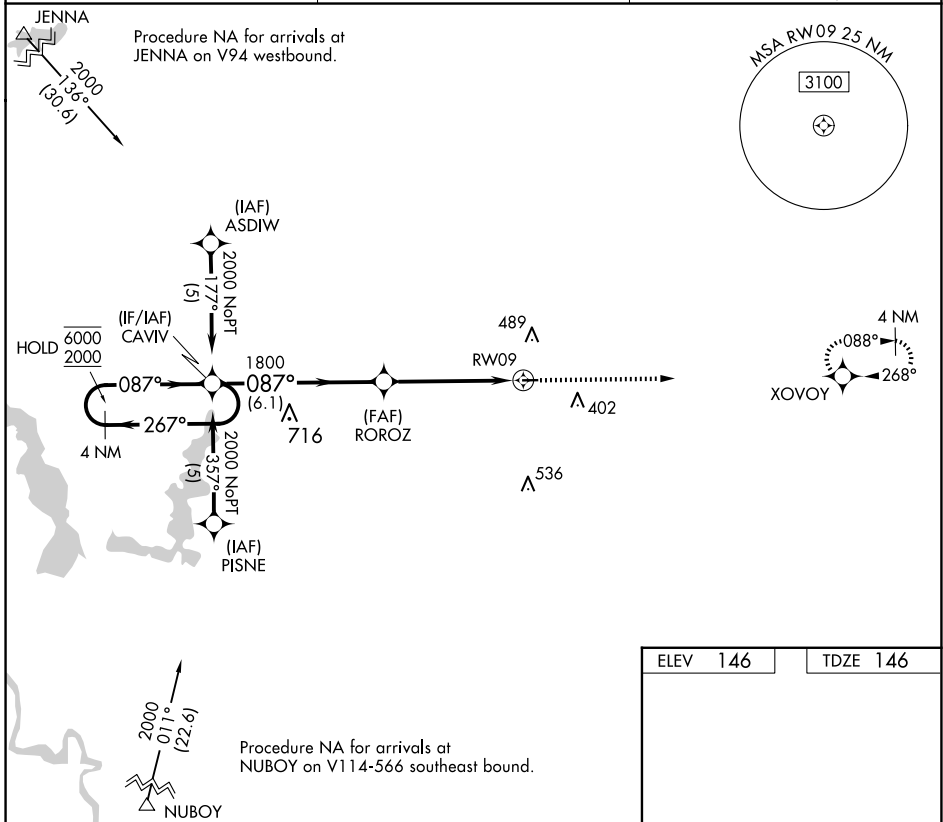
APP CRS	Rwy Idg	<b>3002</b>
<b>087°</b>	TDZE	<b>146</b>
	Apt Elev	<b>146</b>

# RNAV (GPS) RWY 9

DAVID G JOYCE (ØR5)

RNP APCH - GPS.		MISSED APPROACH: Climb to 2000 direct XVOVOY and hold.
<b>⚠</b> Procedure NA at night. Rwy 9 helicopter visibility reduction below 1 SM NA. Use Alexandria Intl altimeter setting, when not received use Esler Rgnl altimeter setting.		

AEX ASOS <b>123.975</b>	POLK APP CON <b>125.4 302.2</b>	UNICOM <b>122.7 (CTAF) 0</b>
----------------------------	------------------------------------	---------------------------------



ELEV	146	TDZE	146
------	-----	------	-----

MIRL Rwy 9-27 0  
 REIL Rws 9 and 27 0

CATEGORY	A	B	C	D
LNVA MDA	780-1	634 (700-1)		NA
<b>C</b> CIRCLING	780-1 634 (700-1)	900-1 754 (800-1)		NA

SC-4, 20 FEB 2025 to 20 MAR 2025

SC-4, 20 FEB 2025 to 20 MAR 2025