

APP CRS	Rwy Idg	<b>3795</b>
<b>097°</b>	TDZE	<b>881</b>
	Apt Elev	<b>895</b>

# RNAV (GPS) RWY 10

MARLETTE TOWNSHIP (77G)

RNP APCH - GPS.

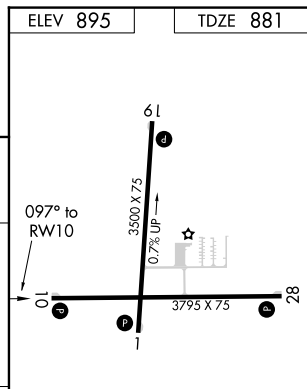
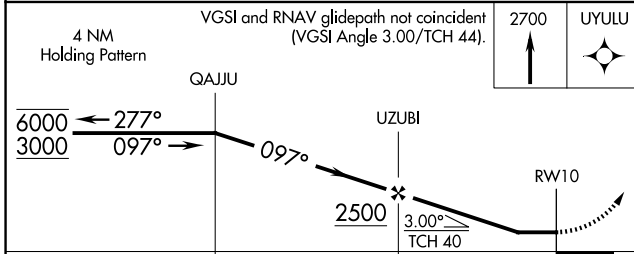
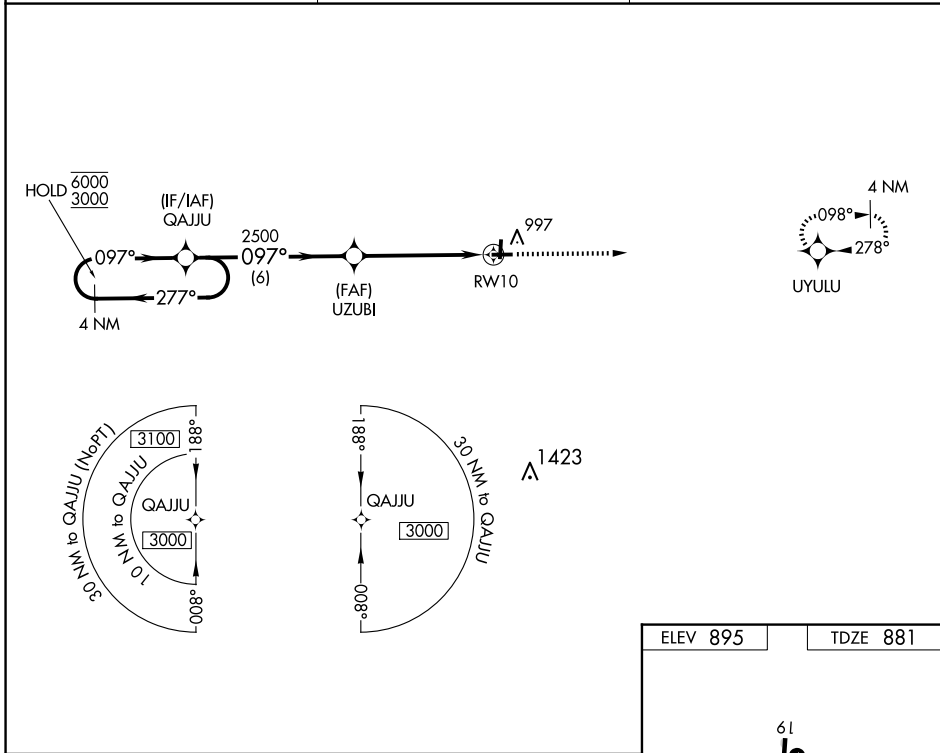
**⚠** Rwy 10 helicopter visibility reduction below 1 SM NA. Straight-in Rwy 10 NA at night, Circling Rwy 10, 19 NA at night. Use Caro altimeter setting, when not received, use Bad Axe altimeter setting and increase all MDAs 20 feet and LNAV visibility Cat C/D 1/2 SM.

MISSED APPROACH:  
Climb to 2700 direct UYULU and hold.

CFS AWOS-3  
**119.275**

CLEVELAND CENTER  
**127.7 290.425**

UNICOM  
**122.8 (CTAF) 0**



CATEGORY	A	B	C	D
LNAV MDA	1420-1	539 (600-1)	1420-1½	539 (600-1½)
<b>C</b> CIRCLING	1460-1	565 (600-1)	1460-1½	1560-2
			565 (600-1½)	665 (700-2)

MIRL Rwy 1-19 and 10-28 **0**

EC-1, 20 FEB 2025 to 20 MAR 2025

EC-1, 20 FEB 2025 to 20 MAR 2025