

APP CRS **181°**
 Rwy Idg **5007**
 TDZE **314**
 Apt Elev **319**

RNAV (GPS) RWY 18

RALPH C WEISER FLD (AGO)

RNP APCH - GPS.

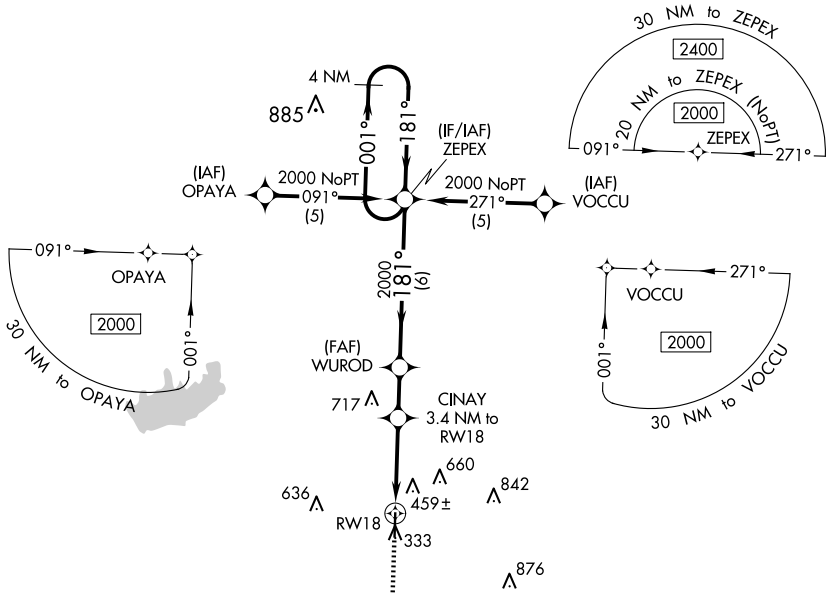
When local altimeter setting not received, use El Dorado altimeter setting and increase all MDAs 60 feet. VDP NA with El Dorado altimeter setting. Rwy 18 helicopter visibility reduction below $\frac{3}{4}$ SM NA.

MISSED APPROACH: Climb to 2000 direct REPAE and hold.

AWOS-3
118.05

FORT WORTH CENTER
128.2 269.1

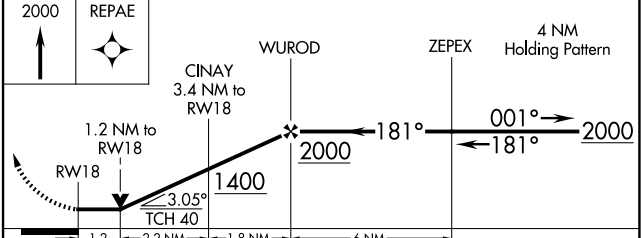
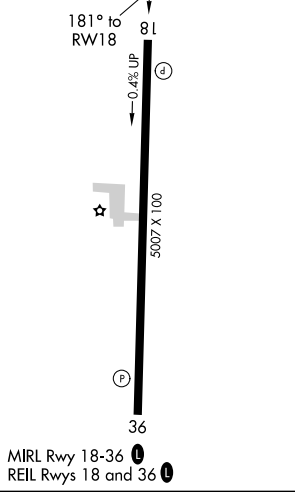
UNICOM
122.8 (CTAF) 0



SC-1, 20 FEB 2025 to 20 MAR 2025

SC-1, 20 FEB 2025 to 20 MAR 2025

ELEV 319 | TDZE 314



CATEGORY	A	B	C	D
LNAV MDA	980-1	666 (700-1)	980-1 $\frac{7}{8}$ 666 (700-1 $\frac{7}{8}$)	NA
CIRCLING	980-1	661 (700-1)	980-1 $\frac{7}{8}$ 661 (700-1 $\frac{7}{8}$)	NA