

WAAS CH 82733 W33A	APP CRS 335°	Rwy Idg TDZE 766 Apt Elev 769	3304
--	------------------------	---	-------------

RNAV (GPS) RWY 33

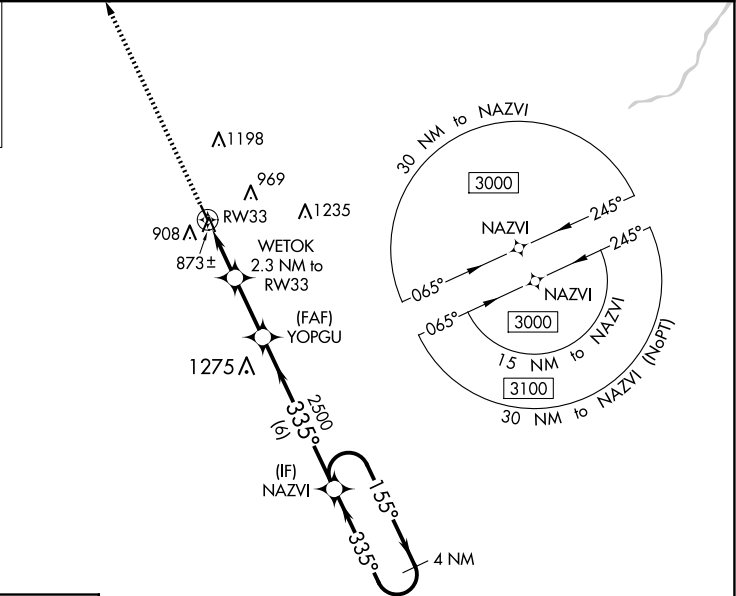
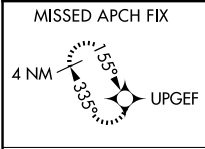
MAQUOKETA MUNI (OQW)

⚠ Circling to Rwy 15 NA at night. Baro-VNAV NA when using Dubuque altimeter setting. For uncompensated Baro-VNAV systems, LNAV/VNAV NA below -16°C (4°F) or above 54°C (130°F). DME/DME RNP-0.3 NA. Helicopter visibility reduction below 1 SM NA. Obtain local altimeter on CTAF; when not received, use Dubuque altimeter setting and increase all DA 92 feet and all MDA 100 feet. Increase LPV all Cats visibility to 1¼ mile and LNAV/VNAV all Cats visibility to 1½ mile.

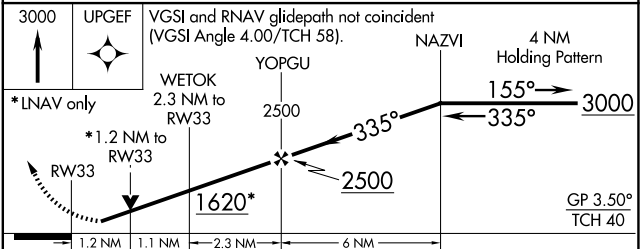
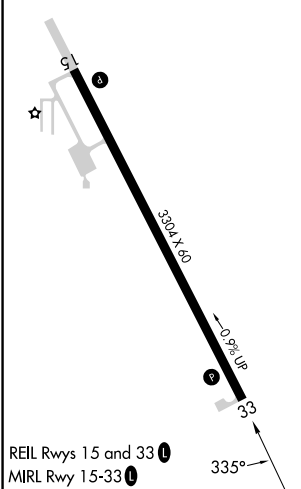
MISSED APPROACH: Climb to 3000 direct UPGEF and hold.

CHICAGO CENTER
133.95 281.4

UNICOM
122.725 (CTAF) 0



ELEV 769	TDZE 766
----------	----------



CATEGORY	A	B	C	D
LPV DA	1106-1	340 (400-1)		NA
LNAV/VNAV DA	1064-1	298 (300-1)		NA
LNAV MDA	1140-1	374 (400-1)		NA
C CIRCLING	1240-1 471 (500-1)	1400-1 631 (700-1)		NA

NC-3, 20 FEB 2025 to 20 MAR 2025

NC-3, 20 FEB 2025 to 20 MAR 2025