

VORTAC FBC <b>108.2</b> Chan <b>19</b>	APP CRS <b>298°</b>	Rwy Idg TDZE Apt Elev	<b>4502</b> <b>763</b> <b>763</b>
--	------------------------	-----------------------------	---

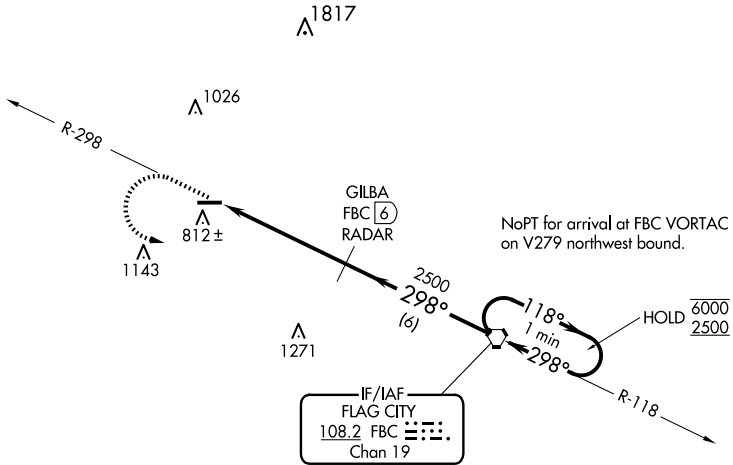
# VOR RWY 27

PUTNAM COUNTY (OWX)

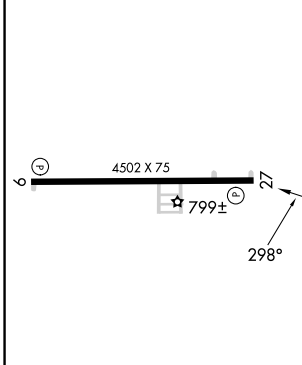
RADAR or DME required.  
 ▼ Rwy 27 helicopter visibility reduction below 1 SM NA.  
 ▲ NA Straight-in, Circling Rwy 27 NA at night.

MISSED APPROACH: Climb to 2500 on FBC VORTAC R-298 then left turn direct FBC VORTAC and hold.

AWOS-3 <b>120.525</b>	TOLEDO APP CON <b>120.8 317.55</b>	UNICOM <b>122.7 (CTAF) 0</b>
--------------------------	---------------------------------------	---------------------------------

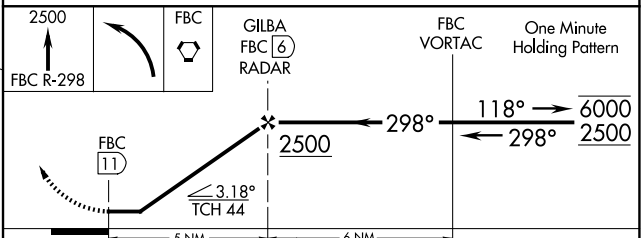


ELEV 763	TDZE 763
----------	----------



REIL Rwys 9 and 27 (L)  
 MRL Rwy 9-27 (L)

FAF to MAP 5 NM					
Knots	60	90	120	150	180
Min:Sec	5:00	3:20	2:30	2:00	1:40



CATEGORY	A	B	C	D
S-27	1220-1	457 (500-1)	NA	
CIRCLING	1220-1	457 (500-1)	NA	

EC-2, 20 FEB 2025 to 20 MAR 2025

EC-2, 20 FEB 2025 to 20 MAR 2025