

WAAS CH <b>63138</b> <b>W13A</b>	APP CRS <b>136°</b>	Rwy ldg <b>3401</b> TDZE <b>754</b> Apt Elev <b>754</b>
--	------------------------	---

# RNAV (GPS) RWY 13

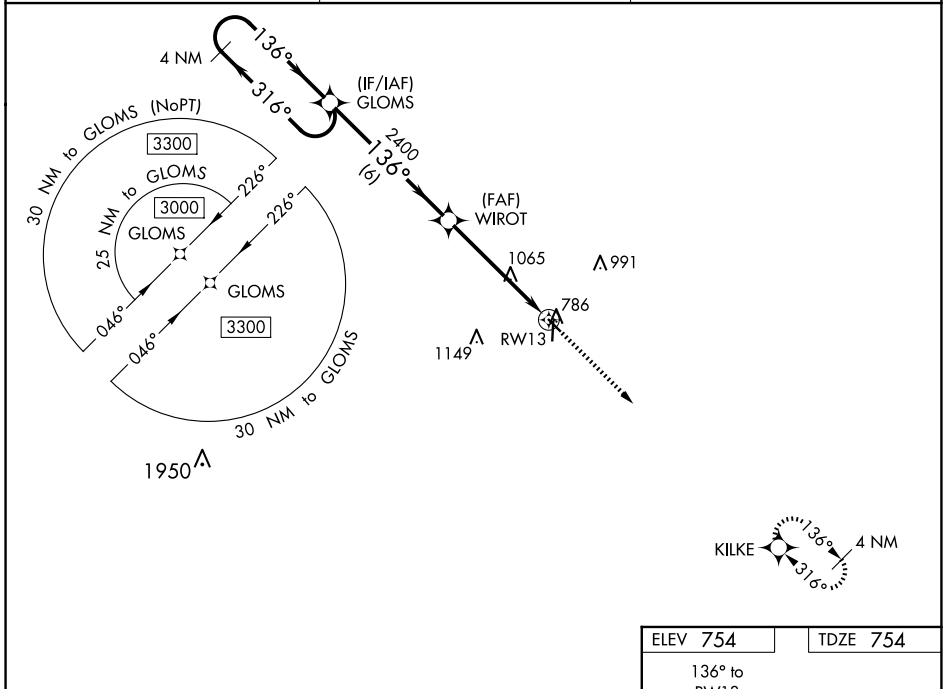
WASHINGTON MUNI (A WG)

RNP APCH.

▼ For uncompensated Baro-VNAV systems, LNAV/VNAV NA below -6°C (22°F) or above 54°C (130°F).  
 ▲ Baro-VNAV and VDP NA when using Iowa City altimeter setting. When local altimeter setting not received, use Iowa City altimeter setting; increase LPV DA to 1066 feet, LNAV/VNAV DA to 1282 feet; increase all MDAs 80 feet and visibility LNAV and Circling Cat C ¼ SM.

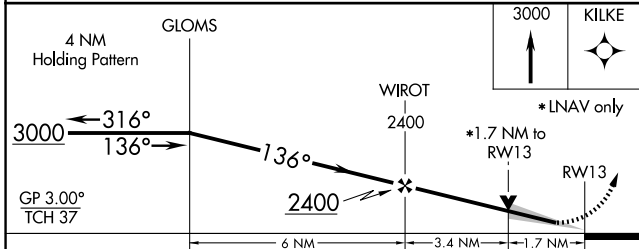
MISSED APPROACH:  
 Climb to 3000 direct KILKE and hold.

AWOS-3 <b>127.825</b>	CHICAGO CENTER <b>135.6 370.95</b>	UNICOM <b>122.7 (CTAF) 0</b>
--------------------------	---------------------------------------	---------------------------------



NC-3, 20 FEB 2025 to 20 MAR 2025

NC-3, 20 FEB 2025 to 20 MAR 2025



ELEV 754	TDZE 754
----------	----------

The diagram shows RWY 13 with a width of 4000 X 75. It also shows taxiway (340) X 50 and other markings. A note indicates 'MIRL Rwys 13-31 and 18-36' and 'REIL Rwys 13, 31, 18 and 36'.

CATEGORY	A	B	C	D
LPV DA	1004-1 250 (300-1)			NA
LNAV/VNAV DA	1220-1½ 466 (500-1½)			NA
LNAV MDA	1320-1 566 (600-1)	1320-1½ 566 (600-1½)		NA
CIRCLING	1320-1 566 (600-1)	1500-2¼ 746 (800-2¼)		NA