

WAAS CH 90538 W31A	APP CRS 316°	Rwy ldg 3401 TDZE 754 Apt Elev 754
--	------------------------	---

RNAV (GPS) RWY 31

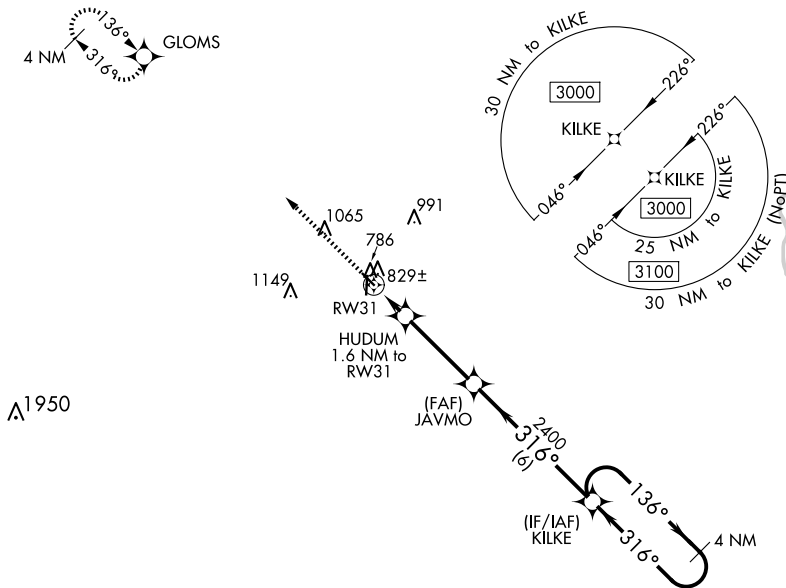
WASHINGTON MUNI (A WG)

RNP APCH.

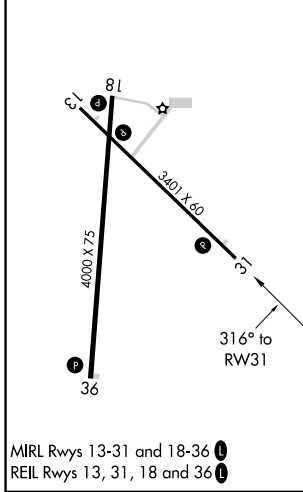
▼ For uncompensated Baro-VNAV systems, LNAV/VNAV NA below -6°C (22°F) or above 54°C (130°F).
 ▲ Rwy 31 helicopter visibility reduction below ¼ SM NA. Baro-VNAV and VDP NA when using Iowa City altimeter setting. When local altimeter setting not received, use Iowa City altimeter setting: increase LPV and LNAV/VNAV DA to 1066 feet; increase all MDAs 80 feet and visibility LNAV Cat C ¼ SM and Circling Cat C ¼ SM.

MISSED APPROACH:
Climb to 3000 direct GLOMS and hold.

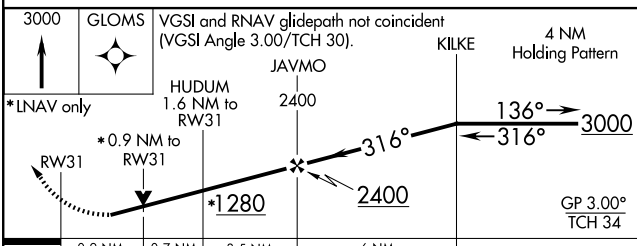
AWOS-3 127.825	CHICAGO CENTER 135.6 370.95	UNICOM 122.7 (CTAF) 0
--------------------------	---------------------------------------	---------------------------------



ELEV 754	TDZE 754
----------	----------



MIRL Rwy 13-31 and 18-36
 REIL Rwy 13, 31, 18 and 36



CATEGORY	A	B	C	D
LPV DA	1004-1	250 (300-1)		NA
LNAV/VNAV DA	1004-1	250 (300-1)		NA
LNAV MDA	1080-1	326 (400-1)		NA
<input checked="" type="checkbox"/> CIRCLING	1200-1 446 (500-1)	1260-1 506 (600-1)	1500-2¼ 746 (800-2¼)	NA

NC-3, 20 FEB 2025 to 20 MAR 2025

NC-3, 20 FEB 2025 to 20 MAR 2025