

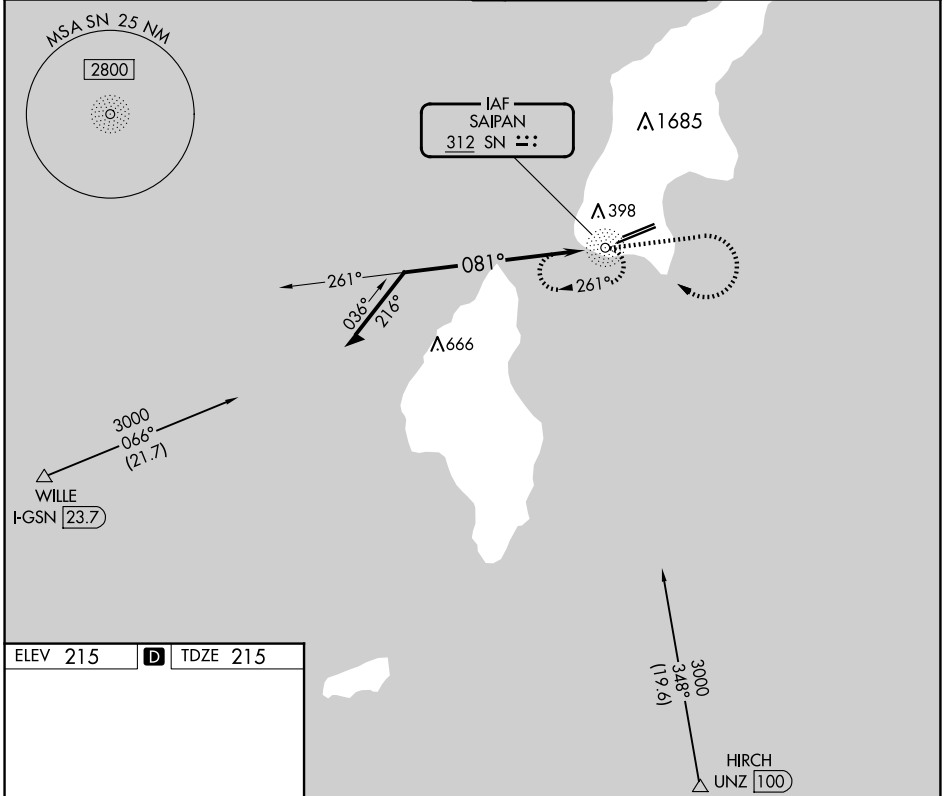
NDB SN	APP CRS	Rwy Idg	8010
312	081°	TDZE	215
		Apt Elev	215

NDB Y RWY 7

FRANCISCO C ADA/SAIPAN INTL (GSN)(PGSN)

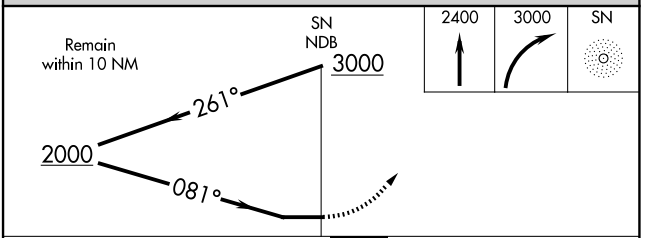
	Circling NA north of Rwy 6-24.	MALSR 	MISSED APPROACH: Climb to 2400 then climbing right turn to 3000 direct SN NDB and hold.

ATIS 127.2	GUAM CERAP 118.4 290.5	SAIPAN TOWER 125.7 256.9	GND CON 121.8
----------------------	----------------------------------	------------------------------------	-------------------------



ELEV 215	D	TDZE 215
----------	----------	----------

REIL Rwy 7 and 25
HIRL Rwy 7-25
MIRL Rwy 6-24



CATEGORY	A	B	C	D
S-7	900-3/4	685 (700-3/4)	900-1 1/2	685 (700-1 1/2)
C CIRCLING	900-1	685 (700-1)	900-2 685 (700-2)	900-2 1/4 685 (700-2 1/4)

PAC, 20 FEB 2025 to 17 APR 2025

PAC, 20 FEB 2025 to 17 APR 2025