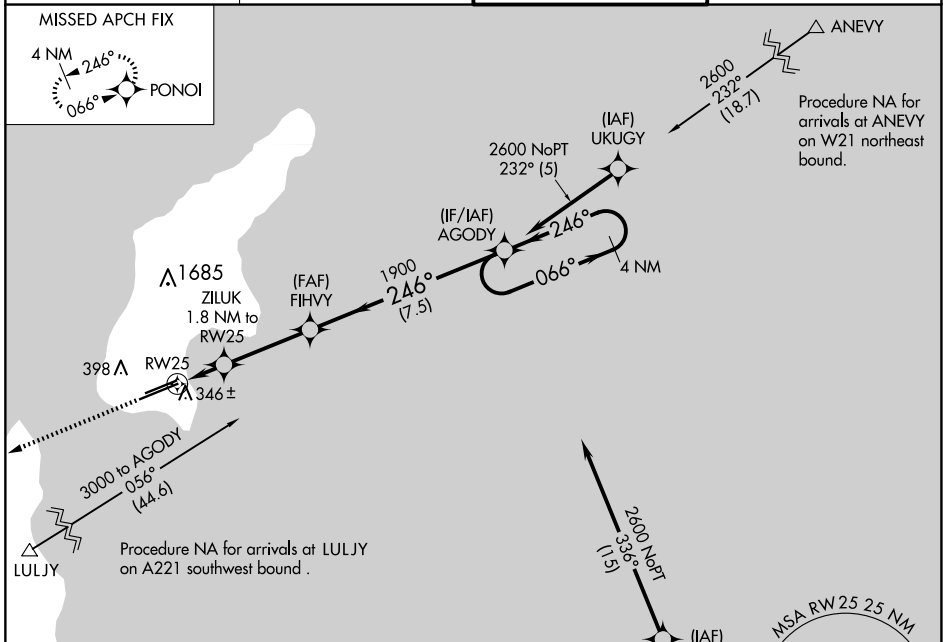


APP CRS	Rwy Idg	8010
246°	TDZE	210
	Apt Elev	215

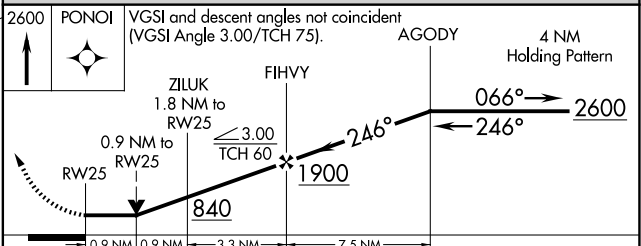
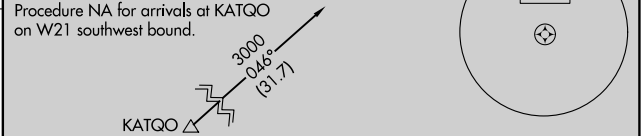
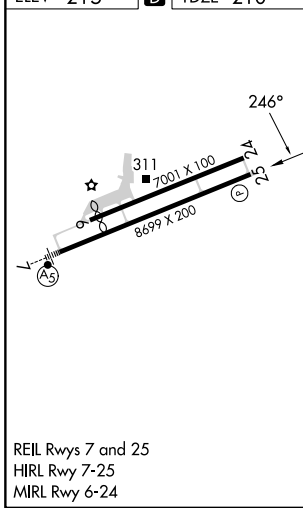
RNAV (GPS) RWY 25

FRANCISCO C ADA/SAIPAN INTL (G5N)(P5G5N)

RNP APCH - GPS.		MISSED APPROACH: Climb to 2600 direct PONOI and hold.	
<p>⚠ Circling NA north of Rwy 6-24. Rwy 25 helicopter visibility reduction below 3/4 NA.</p>		SAIPAN TOWER	GND CON
ATIS	GUAM CERAP	125.7 256.9	121.8
127.2	118.4 290.5		



ELEV 215	D	TDZE 210
----------	----------	----------



CATEGORY	A	B	C	D
LNAV MDA	600-1	390 (400-1)	600-1 1/8	390 (400-1 1/8)
C CIRCLING	720-1	505 (600-1)	720-1 1/2	780-2
			505 (600-1 1/2)	565 (600-2)

PAC, 20 FEB 2025 to 17 APR 2025

PAC, 20 FEB 2025 to 17 APR 2025