

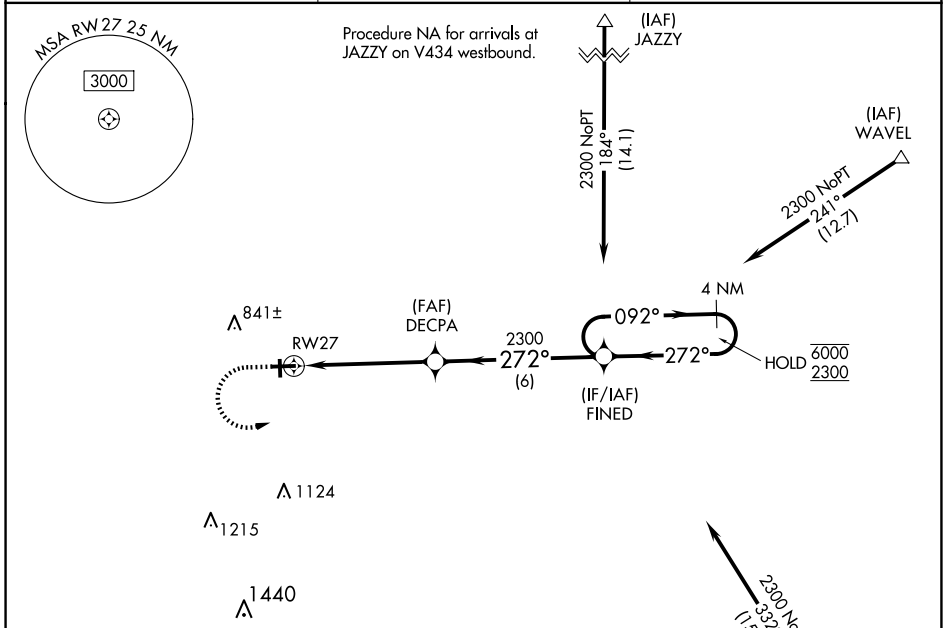
WAAS CH 61239 W27A	APP CRS 272°	Rwy Idg TDZE Apt Elev	4501 651 654
--	------------------------	-----------------------------	---

RNAV (GPS) RWY 27

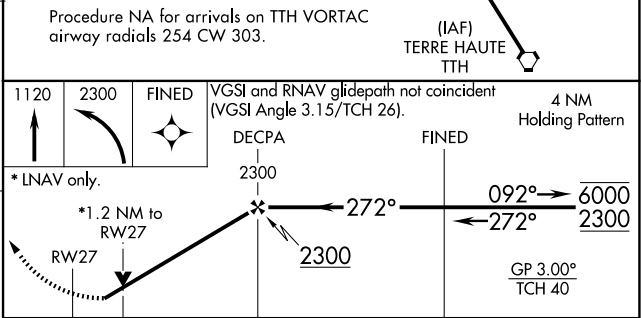
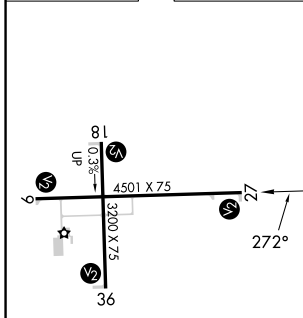
EDGAR COUNTY (PRG)

RNP APCH.	MISSED APPROACH: Climb to 1120 then climbing left turn to 2300 direct FINED and hold.
⚠ Circling Rwy 18 NA at night. Rwy 27 helicopter visibility reduction below 3/4 SM NA. ⚠ For uncompensated Baro-VNAV systems, LNAV/VNAV NA below -16°C or above 54°C.	

AWOS-3 124.175	HULMAN APP CON 125.45 339.8	UNICOM 123.0 (CTAF) 0
--------------------------	---------------------------------------	---------------------------------



ELEV 654	TDZE 651
-----------------	-----------------



REIL Rwy 27 MIRL Rwy 9-27 and 18-36	<table border="1"> <tr> <td>1.2 NM</td> <td>3.9 NM</td> <td>6 NM</td> <td></td> <td></td> </tr> </table>				1.2 NM	3.9 NM	6 NM		
1.2 NM	3.9 NM	6 NM							
CATEGORY	A	B	C	D					
LPV DA	901-1 250 (300-1)								
LNAV/VNAV DA	925-1 274 (300-1)								
LNAV MDA	1080-1 429 (500-1)	1080-1/4 429 (500-1/4)							
C CIRCLING	1080-1 426 (500-1)	1120-1 466 (500-1)	1200-1/2 546 (600-1/2)	1320-2 666 (700-2)					

EC-3, 20 FEB 2025 to 20 MAR 2025

EC-3, 20 FEB 2025 to 20 MAR 2025