

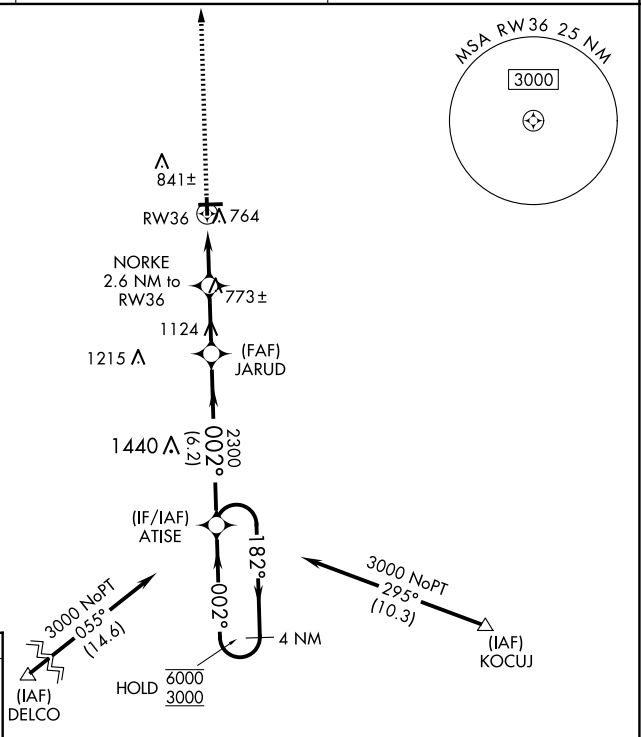
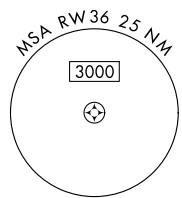
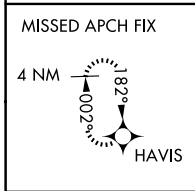
WAAS CH <b>78339</b> <b>W36A</b>	APP CRS <b>002°</b>	Rwy Idg TDZE <b>3200</b> <b>654</b> Apt Elev <b>654</b>
--	------------------------	--

# RNAV (GPS) RWY 36

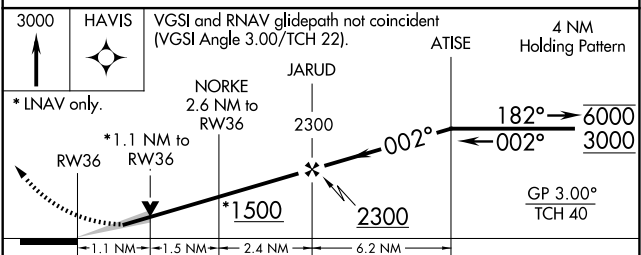
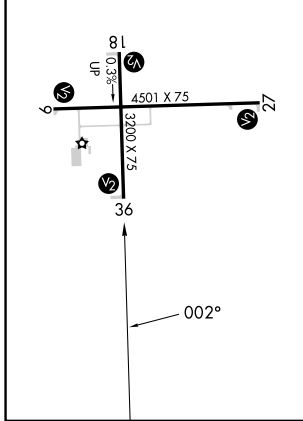
EDGAR COUNTY (PRG)

RNP APCH.	MISSED APPROACH: Climb to 3000 direct HAVIS and hold.
<p><b>⚠</b> For uncompensated Baro-VNAV systems, procedure NA below -16°C or above 54°C.  <b>⚠</b> Circling Rwy 18 NA at night.</p>	

AWOS-3 <b>124.175</b>	HULMAN APP CON <b>125.45 339.8</b>	UNICOM <b>123.0 (CTAF)</b>
--------------------------	---------------------------------------	-------------------------------



ELEV 654	TDZE 654
REIL Rwy 27 MIRL Rwys 9-27 and 18-36	



3000	HAVIS	VGSi and RNAV glidepath not coincident (VGSi Angle 3.00°/TCH 22).			
* LNAV only.		NORKE 2.6 NM to RW36		JARUD 2300	
RW36		* 1.1 NM to RW36		* 1500	
-1.1 NM		-1.5 NM		-2.4 NM	
-6.2 NM		-6.2 NM		-6.2 NM	
CATEGORY	A	B	C	D	
LPV DA	904-1		250 (300-1)		
LNAV/VNAV DA	925-1		271 (300-1)		
LNAV MDA	1020-1		366 (400-1)		
CIRCLING	1080-1	1120-1	1200-1½	1320-2	
	426 (500-1)	466 (500-1)	546 (600-1½)	666 (700-2)	

EC-3, 20 FEB 2025 to 20 MAR 2025

EC-3, 20 FEB 2025 to 20 MAR 2025