

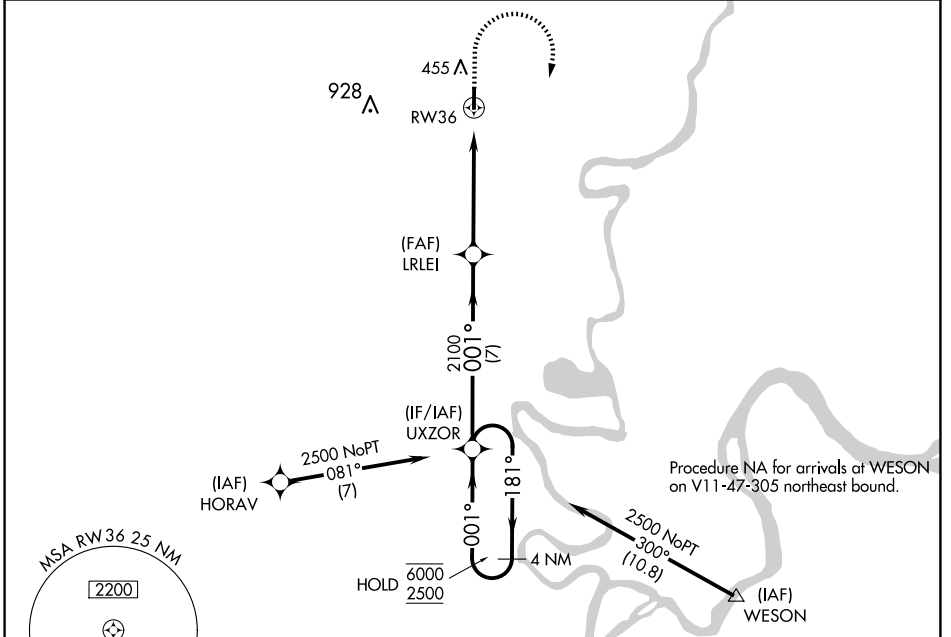
WAAS CH 77625 W36A	APP CRS 001°	Rwy Idg TDZE Apt Elev	4000 386 388
--	------------------------	-----------------------------	---

RNAV (GPS) RWY 36

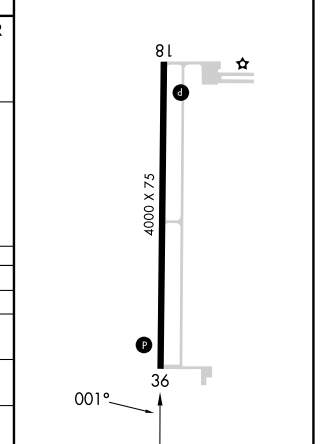
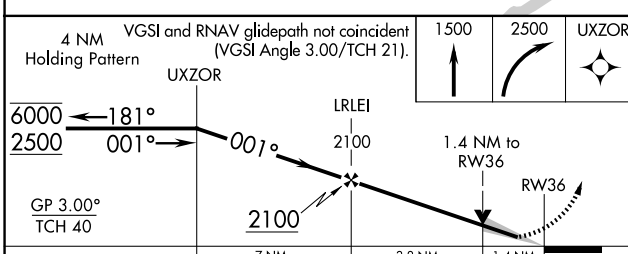
CARMI MUNI (CUL)

RNP APCH - GPS.	MISSED APPROACH: Climb to 1500 then climbing right turn to 2500 direct UXZOR and hold.
▽ For uncompensated Baro-VNAV systems, LNAV/VNAV NA below -19°C or above 54°C.	

AWOS-3 118.425	EVANSVILLE APP CON * 127.35 343.7	UNICOM 122.8 (CTAF) ①
--------------------------	---	--



ELEV 388	TDZE 386
REIL Rwy 36 ①	
MIRL Rwy 18-36 ①	



CATEGORY	A	B	C	D
LPV DA	636-3/4	250 (300-3/4)		NA
LNAV/VNAV DA	796-1 1/8	410 (500-1 1/8)		NA
LNAV MDA	860-1	474 (500-1)	860-1 3/8 474 (500-1 3/8)	NA
C CIRCLING	860-1	472 (500-1)	1000-1 3/4 612 (700-1 3/4)	NA

EC-3, 20 FEB 2025 to 20 MAR 2025

EC-3, 20 FEB 2025 to 20 MAR 2025