

WAAS CH 56433 W27A	APP CRS 273°	Rwy Idg TDZE Apt Elev	4500 858 858
--	------------------------	-----------------------------	---

RNAV (GPS) RWY 27

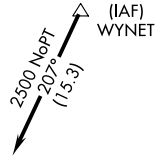
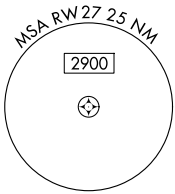
KEWANEE MUNI (EZI)

Baro-VNAV NA. DME/DME RNP-0.3 NA. Use Galesburg altimeter setting; when not received, use Moline altimeter setting and increase all DA 29 feet and all MDA 40 feet, increase LPV all Cats and LNAV Cat C visibility 1/8 mile, and Circling Cat C visibility 1/4 mile.

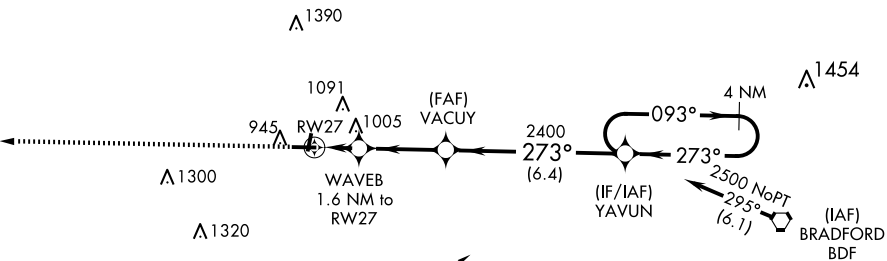
MISSED APPROACH: Climb to 2400 direct WIKOK and hold.

QUAD CITY APP CON *
133.275 257.8

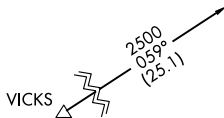
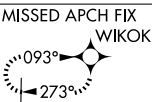
UNICOM
122.8 (CTAF)



Procedure NA for arrivals at WYNET on V8-38 eastbound.

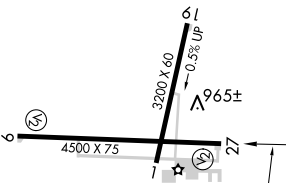
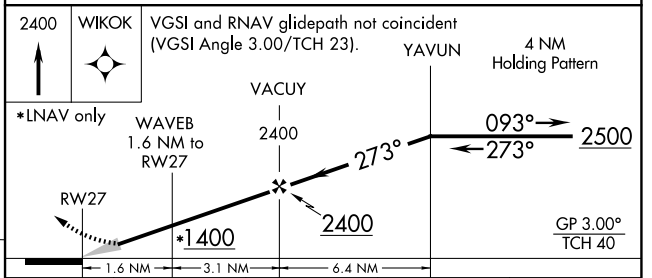


Procedure NA for arrivals at BDF VORTAC on V156 eastbound.



Procedure NA for arrivals at VICKS on V434 northwest bound.

ELEV 858	TDZE 858
----------	----------



CATEGORY	A	B	C	D
LPV DA	1183-1 1/8 325 (400-1 1/8)			NA
LNAV/VNAV DA	1212-1 1/4 354 (400-1 1/4)			NA
LNAV MDA	1340-1	482 (500-1)	1340-1 3/8 482 (500-1 3/8)	NA
<input checked="" type="checkbox"/> CIRCLING	1340-1 482 (500-1)	1520-1 662 (700-1)	1520-1 3/4 662 (700-1 3/4)	NA

MIRL Rwy's 1-19 and 9-27

EC-3, 20 FEB 2025 to 20 MAR 2025

EC-3, 20 FEB 2025 to 20 MAR 2025