

WAAS CH 56614 W22A	APP CRS 220°	Rwy Idg TDZE 13 Apt Elev 13	5500
--	------------------------	---	-------------

RNAV (GPS) RWY 22

ORANGE COUNTY (OR.G)

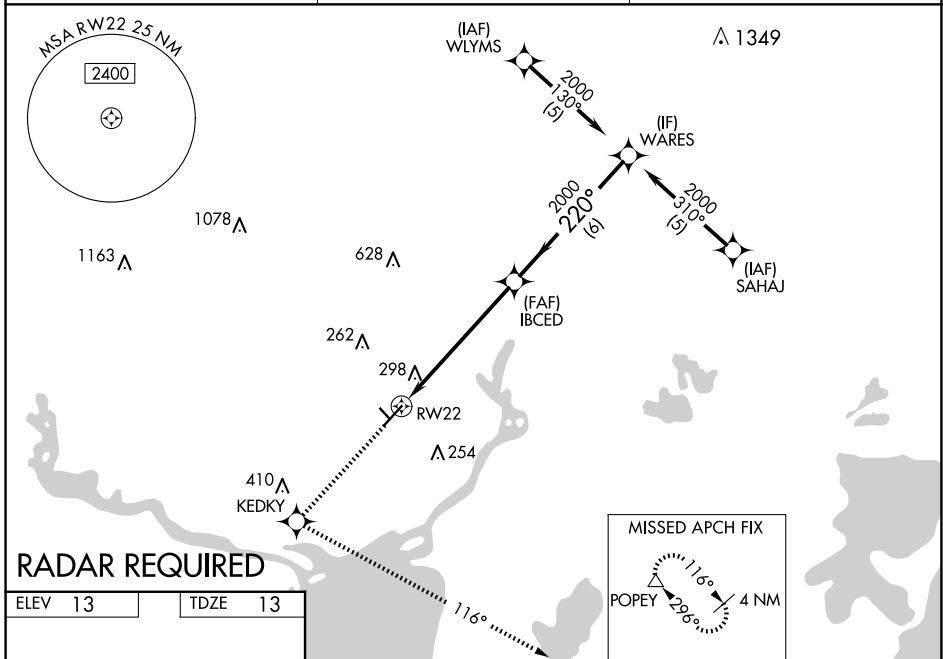
⚠ For uncompensated Baro-VNAV systems, LNAV/VNAV NA below -15°C (5°F) or above 54°C (130°F). DME/DME RNP-0.3 NA. Visibility reduction by helicopters NA. When local altimeter setting not received, use Jack Brooks Rgnl altimeter setting and increase all DA 32 feet and all MDA 40 feet, increase LPV and LNAV/VNAV all Cats visibility ¼ mile, and LNAV and Circling Cat C visibility ¼ mile. Baro-VNAV and VDP NA when using Jack Brooks Rgnl altimeter setting. Circling NA to Rwy 13/31.

MISSED APPROACH: Climb to 2000 direct KEDKY and left turn via track 116° to POPEY and hold.

AWOS-3
118.975

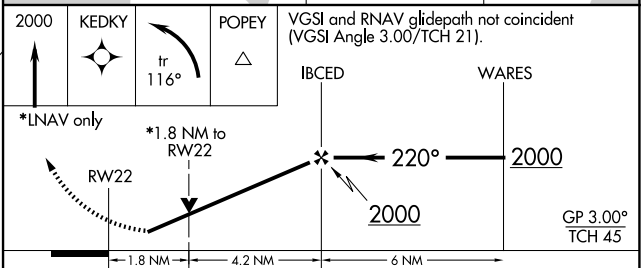
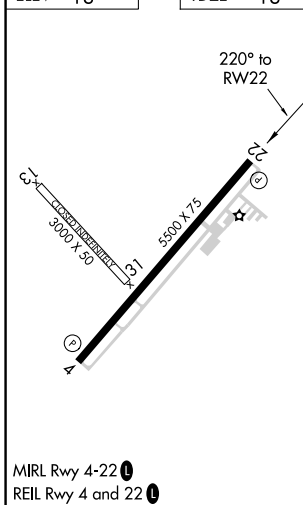
HOUSTON APP CON
121.3 377.1

UNICOM
122.8 (CTAF) 0



RADAR REQUIRED

ELEV 13	TDZE 13
---------	---------



CATEGORY	A	B	C	D
LPV DA		329-1	316 (400-1)	NA
LNAV/VNAV DA		674-2 ¼	661 (700-2 ¼)	NA
LNAV MDA	600-1	587 (600-1)	600-1 ½ 587 (600-1 ½)	NA
CIRCLING	660-1	647 (700-1)	660-1 ¾ 647 (700-1 ¾)	NA

SC-5, 20 FEB 2025 to 20 MAR 2025

SC-5, 20 FEB 2025 to 20 MAR 2025