

CAMP MACKALL, NORTH CAROLINA

# RNAV (GPS) RWY 12

WAAS CH <b>92382</b> W12A	APCH CRS <b>118°</b>	Rwy ldg TDZE Arpt Elev	<b>4794</b> <b>375</b> <b>376</b>
---------------------------------	-------------------------	------------------------------	---

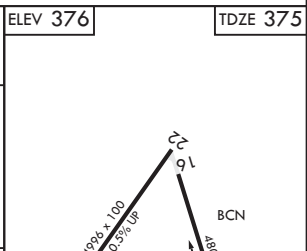
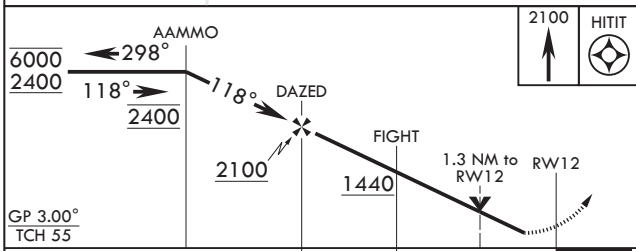
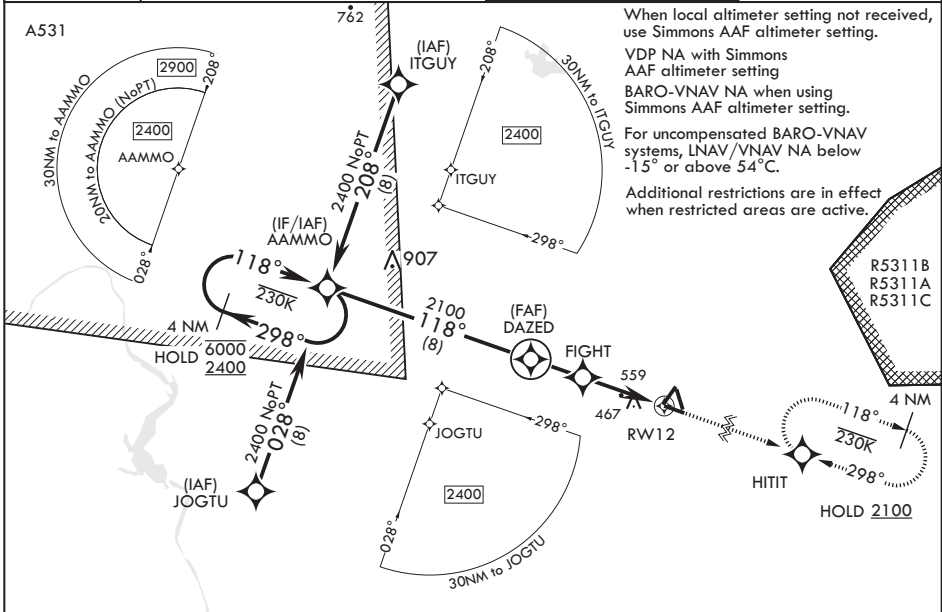
AL-6315 (USA)

MACKALL AAF (KHFF)

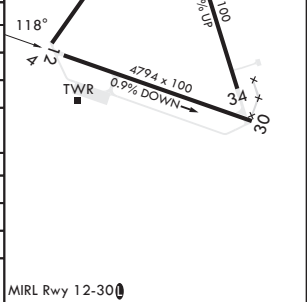
RNP APCH-GPS MISSED APPROACH: Climb to 2100 direct HITIT and hold.

\* When tower closed, increase vis to 1 mile.  
\*\* Circling NA to RWYs 4,16,22, and 34.

D-ATIS <b>141.4</b>	FAYETTEVILLE APP CON/DEP CON <b>127.8 343.725</b>	TOWER★ <b>121.0 (CTAF) 254.4</b>	GND CON <b>128.35 251.05</b>
------------------------	--	-------------------------------------	---------------------------------



CATEGORY	A	B	C	D
LPV DA*	575-¾	200	(200-¾)	
LNAV/VNAV DA	851-1½	476	(500-1½)	
LNAV MDA	840-1 465 (500-1)	840-1½ 465 (500-1½)		
<b>C</b> CIRCLING**	860-1 484 (500-1)	880-1 504 (600-1)	980-1¼ 604 (700-1¼)	1040-2 664 (700-2)
SIMMONS AAF ALTIMETER SETTING MINIMUMS				
LPV DA*	659-7⁄8	284	(300-7⁄8)	
LNAV/VNAV DA	935-1½	560	(600-1½)	
LNAV MDA	940-1 565 (600-1)	940-1½ 565 (600-1½)		
<b>C</b> CIRCLING**	960-1 584 (600-1)	980-1 604 (700-1)	1080-2 704 (800-2)	1140-2½ 764 (800-2½)



CAMP MACKALL, NORTH CAROLINA

35°02'N - 79°30'W

MACKALL AAF (KHFF)

Amdt 1 10AUG23

# RNAV (GPS) RWY 12

SE-2, 20 FEB 2025 to 20 MAR 2025

SE-2, 20 FEB 2025 to 20 MAR 2025