

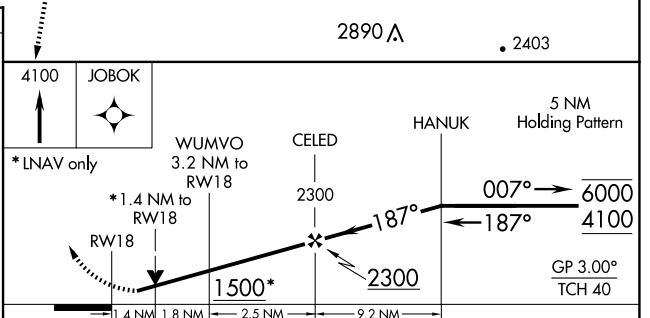
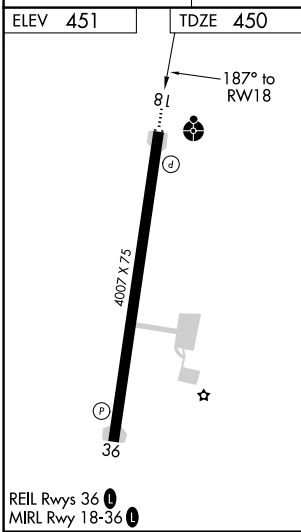
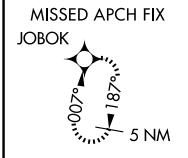
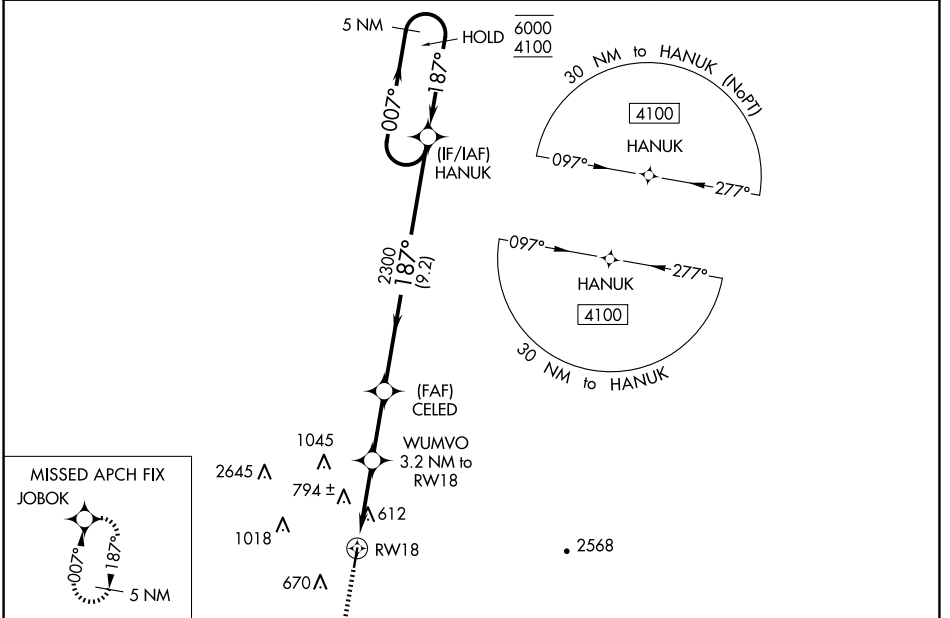
WAAS CH <b>56443</b> <b>W18A</b>	APP CRS <b>187°</b>	Rwy Idg TDZE <b>450</b> Apt Elev <b>451</b>	<b>4007</b>
--	------------------------	---	-------------

# RNAV (GPS) RWY 18

ROBERT S KERR (RKR)

RNP APCH. ⚠ Rwy 18 helicopter visibility reduction below 3/4 SM NA. For uncompensated Baro-VNAV systems, LNAV/VNAV NA below -15°C or above 54°C. ⚠ Circling NA for Cats C and D west of Rwy 18-36.	ODALS 	MISSED APPROACH: Climb to 4100 direct JOBOK and hold, continue climb-in-hold to 4100.
--	-----------	---

AWOS-3 <b>120.625</b>	RAZORBACK APP CON * <b>120.9 343.75</b>	UNICOM <b>122.8</b> (CTAF)
--------------------------	--	-------------------------------



CATEGORY	A	B	C	D
LPV DA		700-1	250 (300-1)	
LNAV/VNAV DA		926-1 3/8	476 (500-1 3/8)	
LNAV MDA	940-1	490 (500-1)	940-1 3/8	490 (500-1 3/8)
CIRCLING	1000-1 549 (600-1)	1100-1 649 (700-1)	1100-1 3/4 649 (700-1 3/4)	1160-2 1/4 709 (800-2 1/4)

SC-1, 20 FEB 2025 to 20 MAR 2025

SC-1, 20 FEB 2025 to 20 MAR 2025