

WAAS CH 97416 W25A	APP CRS 252°	Rwy Idg TDZE Apt Elev	4000 643 643
--	------------------------	-----------------------------	---

RNAV (GPS) RWY 25

MASON COUNTY (3I2)

RNP APCH - GPS.

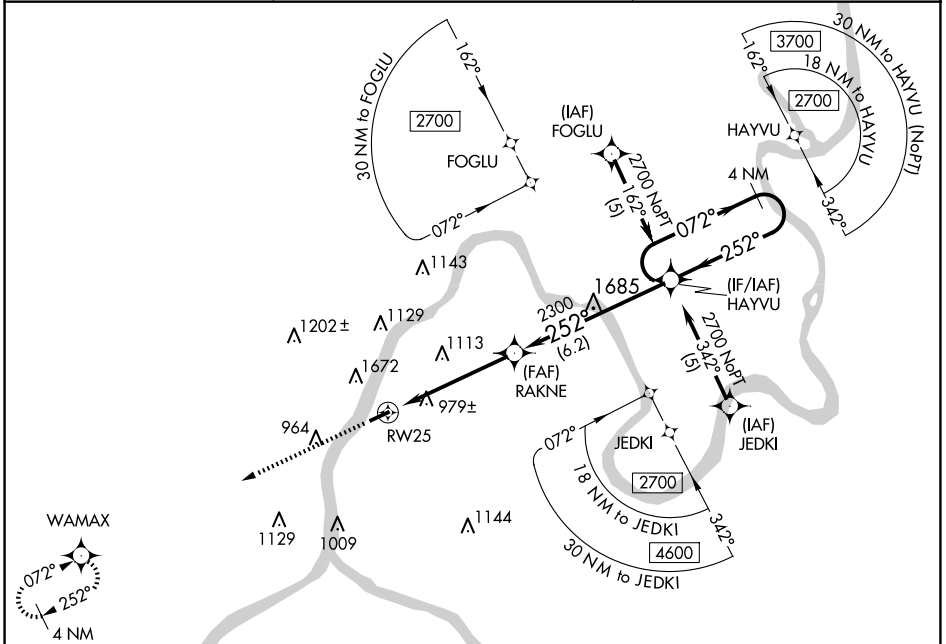
⚠ Circling NA NW of Rwy 7-25. Baro-VNAV NA when using Athens/Albany, OH altimeter setting. For uncompensated Baro-VNAV systems, LNAV/VNAV NA below -16°C or above 47°C. Rwy 25 helicopter visibility reduction below ¾ SM NA. When local altimeter setting not received, use Athens/Albany, OH altimeter setting and increase all DA 61 feet and all MDA 80 feet; increase LPV all Cats visibility ¼ mile and increase LNAV-VNAV all Cats visibility 1 mile. VDP NA when using Ohio University altimeter setting.

MISSED APPROACH:
Climb to 3200 direct WAMAX and hold.

AWOS-3
119.675

HUNTINGTON APP CON
128.4 270.1

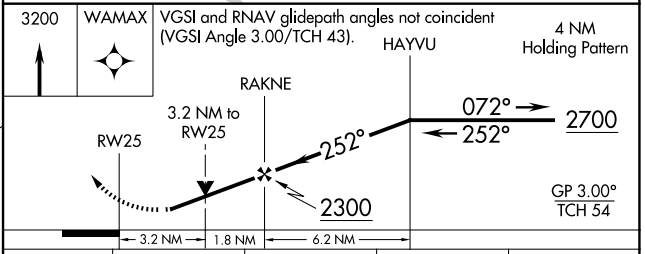
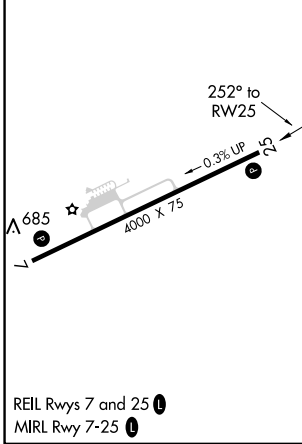
UNICOM
122.8 (CTAF) 0



NE-4, 20 FEB 2025 to 20 MAR 2025

NE-4, 20 FEB 2025 to 20 MAR 2025

ELEV	643	TDZE	643
------	-----	------	-----



CATEGORY	A	B	C	D
LPV DA		1430-2¾	787 (800-2¾)	
LNAV/VNAV DA		1727-4	1084 (1100-4)	
LNAV MDA	1700-1¼ 1057 (1100-1¼)	1700-1½ 1057 (1100-1½)	1700-3	1057 (1100-3)
CIRCLING	1700-1¼ 1057 (1100-1¼)	1700-1½ 1057 (1100-1½)	1700-3	1057 (1100-3)