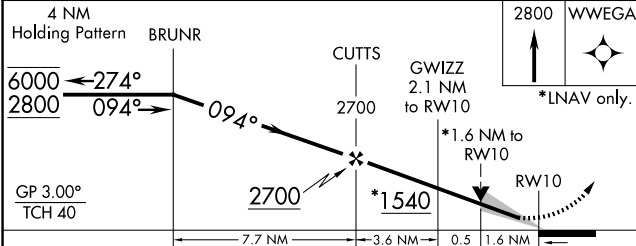
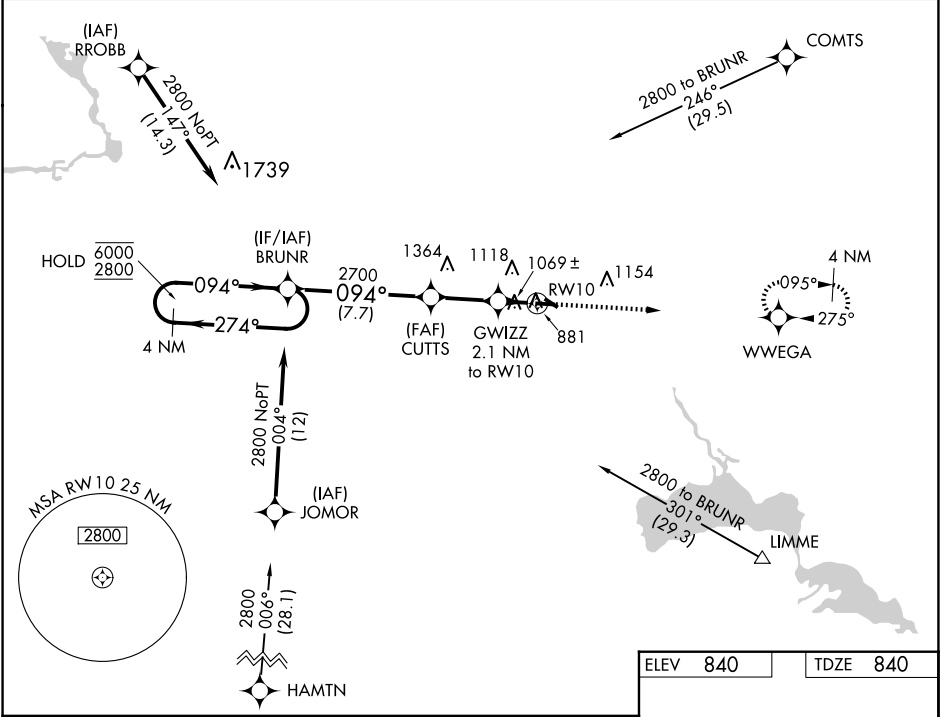


WAAS CH 63120 W10A	APP CRS 094°	Rwy Idg TDZE Apt Elev	5200 840 840
--	------------------------	-----------------------------	---

RNAV (GPS) RWY 10

WAUPACA MUNI (PCZ)

RNP APCH. ▼ For uncompensated Baro-VNAV systems, LNAV/VNAV ▲ NA below -16°C or above 54°C.		MISSED APPROACH: Climb to 2800 direct WVEGA and hold.
AWOS-3 118.625	MINNEAPOLIS CENTER 124.4 317.7	UNICOM 122.8 (CTAF) 0



ELEV 840	TDZE 840
----------	----------

094°
 5200 X 100
 3899 X 75
 282
 31
 -0.6% UP
 -0.7% UP

CATEGORY	A	B	C	D
LPV DA		1090- ³ / ₄	250 (300- ³ / ₄)	
LNAV/VNAV DA		1384-1 ⁵ / ₈	544 (600-1 ⁵ / ₈)	
LNAV MDA	1380-1	540 (600-1)	1380-1 ¹ / ₂	540 (600-1 ¹ / ₂)
CIRCLING	1380-1 540 (600-1)	1420-1 580 (600-1)	1420-1 ¹ / ₂ 580 (600-1 ¹ / ₂)	1500-2 660 (700-2)

REIL Rwy 10 and 28 0
 MIRL Rwy 10-28 and 13-31 0

EC-3, 20 FEB 2025 to 20 MAR 2025

EC-3, 20 FEB 2025 to 20 MAR 2025