

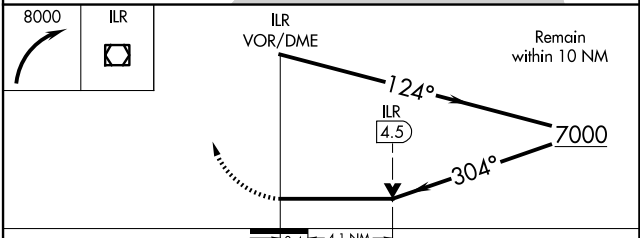
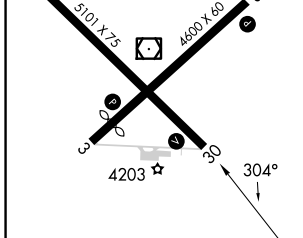
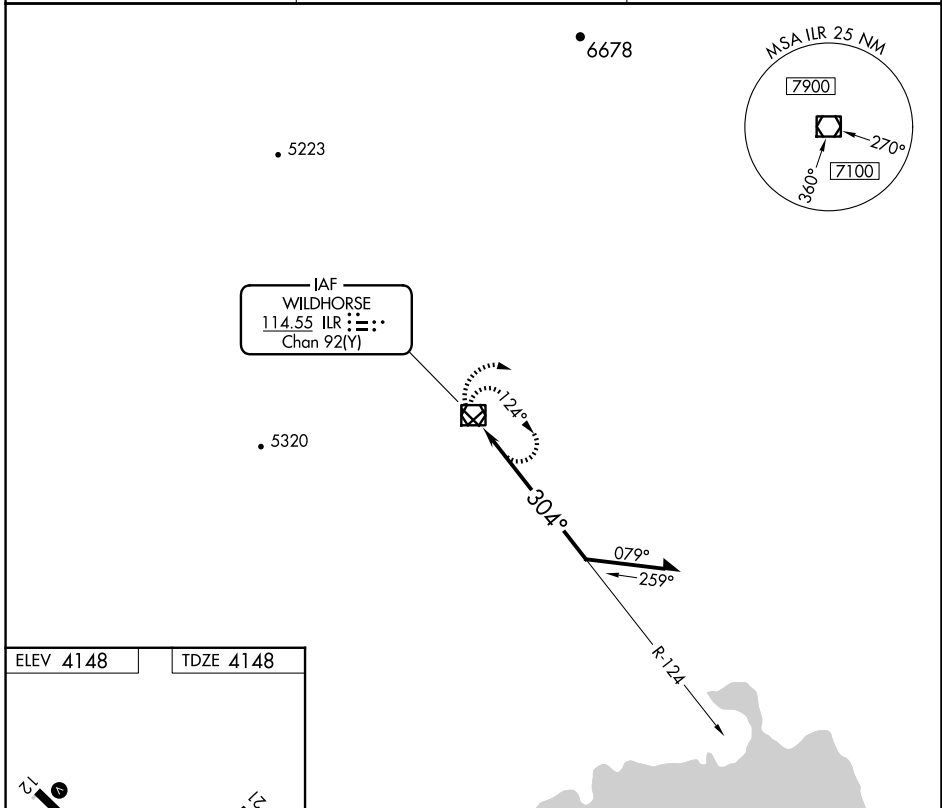
VOR/DME ILR 114.55 Chan 92 (Y)	APP CRS 304°	Rwy Idg TDZE Apt Elev 5101 4148 4148
--	------------------------	--

VOR RWY 30

BURNS MUNI (BNO)

⚠ MISSED APPROACH: Climbing right turn to 8000 in ILR VOR/DME holding pattern.

ASOS 135.575	SALT LAKE CENTER 128.05 306.95	UNICOM 122.8 (CTAF) 0
------------------------	--	--



CATEGORY	A	B	C	D
S-30	5500-1¼ 1352 (1400-1¼)	5500-1½ 1352 (1400-1½)	5500-3	1352 (1400-3)
CIRCLING	5500-1¼ 1352 (1400-1¼)	5500-1½ 1352 (1400-1½)	5500-3	1352 (1400-3)

REIL Rwy 3, 12, 21 and 30 **0**
MIRL Rwy 3-21 and 12-30 **0**

NW-1, 20 FEB 2025 to 20 MAR 2025

NW-1, 20 FEB 2025 to 20 MAR 2025