

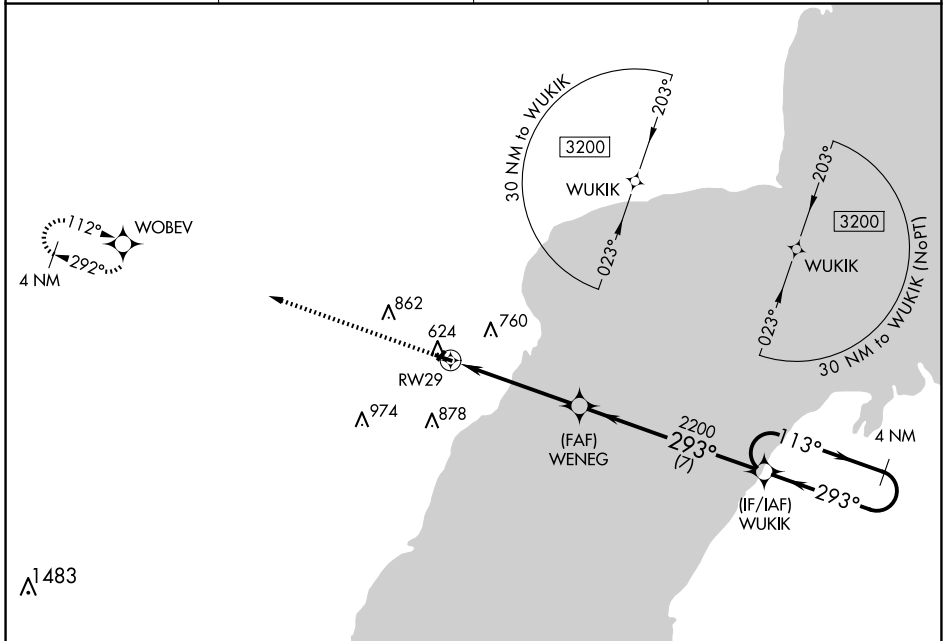
APP CRS	Rwy Idg	3199
293°	TDZE	604
	Apt Elev	604

RNAV (GPS) RWY 29

OCONTO/J DOUGLAS BAKE MUNI (OCQ)

RNP APCH - GPS.	<p>When local altimeter setting not received, use Menominee, MI altimeter setting. Procedure NA at night. Rwy 29 helicopter visibility reduction below 3/4 SM NA. Circling NA to Rwy's 4 and 22.</p>	<p>MISSED APPROACH: Climb to 3200 direct WOBEV and hold.</p>
-----------------	--	--

AWOS-3 120.925	MNM AWOS-3PT 121.45	GREEN BAY APP CON ★ 120.3 338.2	UNICOM 122.8 (CTAF)
--------------------------	-------------------------------	---	-------------------------------



EC-3, 20 FEB 2025 to 20 MAR 2025

EC-3, 20 FEB 2025 to 20 MAR 2025

ELEV 604		TDZE 604	
----------	--	----------	--

3200 WOBEV

WUKIK 4 NM Holding Pattern

WENEG 293° 2200 113° 293° 3200

RWY 29 4.9 NM 7 NM

≤3.00° TCH 40

VGSI and descent angles not coincident (VGSI Angle 4.00/TCH 31).

CATEGORY	A	B	C	D
RNAV MDA	1120-1	516 (600-1)	1120-1 3/8 516 (600-1 3/8)	NA
CIRCLING	1120-1 516 (600-1)	1220-1 616 (700-1)	1260-1 3/4 656 (700-1 3/4)	NA

REIL Rwy's 11 and 29

MIRL Rwy 11-29