

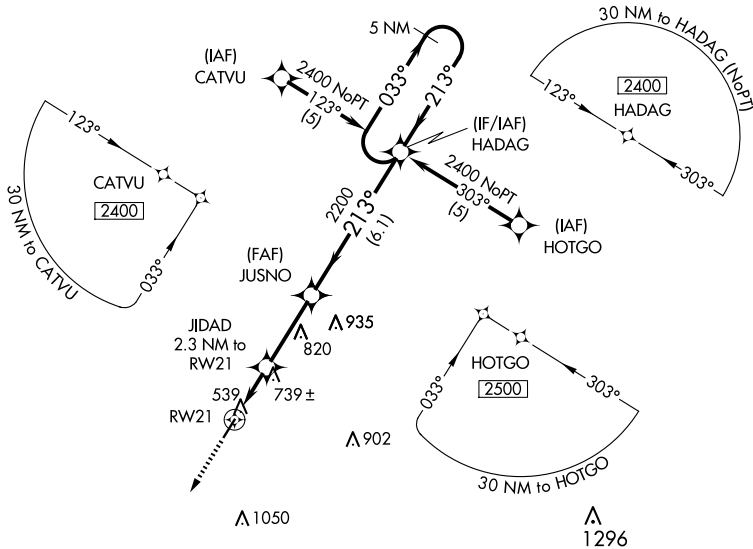
| | |
|-------------|---------------------|
| APP CRS | Rwy Idg 4400 |
| 213° | TDZE 467 |
| | Apt Elev 467 |

RNAV (GPS) RWY 21

RIPLEY (25M)

| | | |
|-----------|---|---|
| RNP APCH. | | MISSED APPROACH: Climb to 2500 direct CEDAS and hold. |
| ▼ | Use Corinth altimeter setting; when not received, use Tupelo altimeter setting and increase all MDA 40 feet, and increase LNAV Cat C visibility 1/4 mile. | |
| ▲ NA | Procedure NA at night. Rwy 21 helicopter visibility reduction below 1 SM NA. | |

| | | |
|--------------------------------|--------------------------------------|---------------------------------|
| CRX AWOS-3PT 118.675 | MEMPHIS CENTER 135.9 260.6 | UNICOM 122.8 (CTAF) 0 |
|--------------------------------|--------------------------------------|---------------------------------|



SC-4, 20 FEB 2025 to 20 MAR 2025

SC-4, 20 FEB 2025 to 20 MAR 2025

| | |
|---|--|
| ELEV 467 | TDZE 467 |
| 2500 | CEDAS |
| VGSIs and descent angles not coincident. (VGSi Angle 3.50/TCH 16) | |
| 5 NM Holding Pattern | |
| JIDAD 2.3 NM to RW21 | JUSNO |
| ≤ 3.04° TCH 40 | 2400 |
| 1220 | 033° |
| 2.3 NM | 2.9 NM |
| 6.1 NM | 213° |
| CATEGORY | A B C D |
| LNAV MDA | 1060-1 593 (600-1) 1060-1 1/2 593 (600-1 1/2) NA |

