

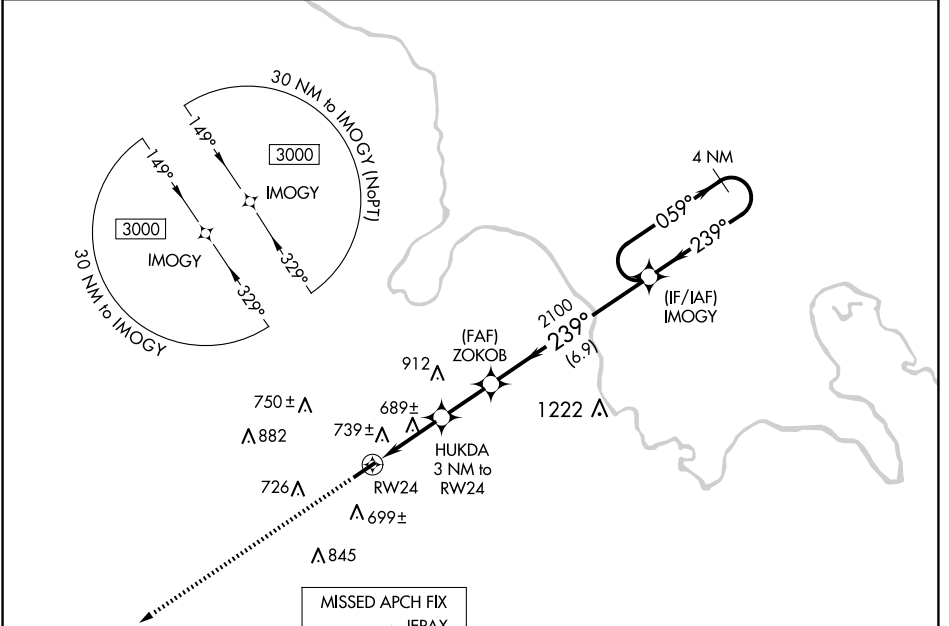
WAAS CH 99627 W24A	APP CRS 239°	Rwy Idg TDZE Apt Elev	4600 425 428
--	------------------------	-----------------------------	---

RNAV (GPS) RWY 24

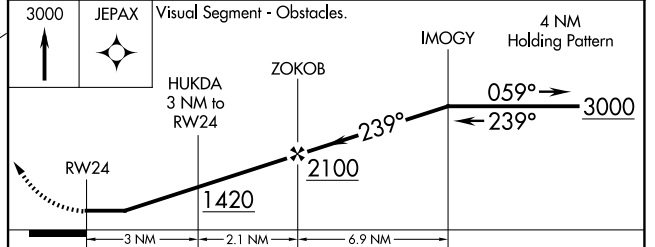
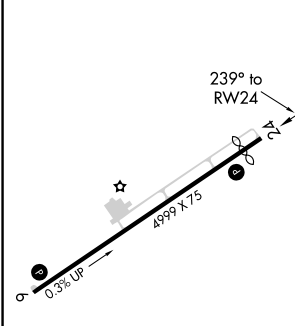
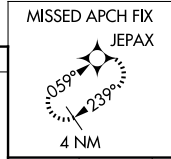
MUHLENBERG COUNTY (M21)

RNP APCH - GPS.	When local altimeter setting not received, use Owensboro altimeter setting and increase all MDAs 80 feet. Increase LP Cats C/D visibility 3/8 SM and LNAV Cats C/D and Circling Cats C/D visibility 1/4 SM. Procedure NA at night. Rwy 24, helicopter visibility reduction below 1 SM NA.	MISSED APPROACH: Climb to 3000 direct JEPAX and hold.
-----------------	---	--

AWOS-3 120.45	CAMPBELL APP CON ★ 118.1 269.525	UNICOM 123.0 (CTAF)
-------------------------	--	-------------------------------



ELEV 428	D	TDZE 425
----------	----------	----------



CATEGORY	A	B	C	D
LP MDA	940-1	515 (600-1)	940-1 ³ / ₈	515 (600-1 ³ / ₈)
LNAV MDA	1000-1	575 (600-1)	1000-1 ⁵ / ₈	575 (600-1 ⁵ / ₈)
C CIRCLING	1040-1 612 (700-1)	1100-1 672 (700-1)	1180-2 ¹ / ₄ 752 (800-2 ¹ / ₄)	1200-2 ¹ / ₂ 772 (800-2 ¹ / ₂)

MIRL Rwy 6-24 **1**
REIL Rwy 6 and 24 **1**

SE-1, 20 FEB 2025 to 20 MAR 2025

SE-1, 20 FEB 2025 to 20 MAR 2025