

APP CRS	Rwy Idg	2163
174°	TDZE	416
	Apt Elev	416

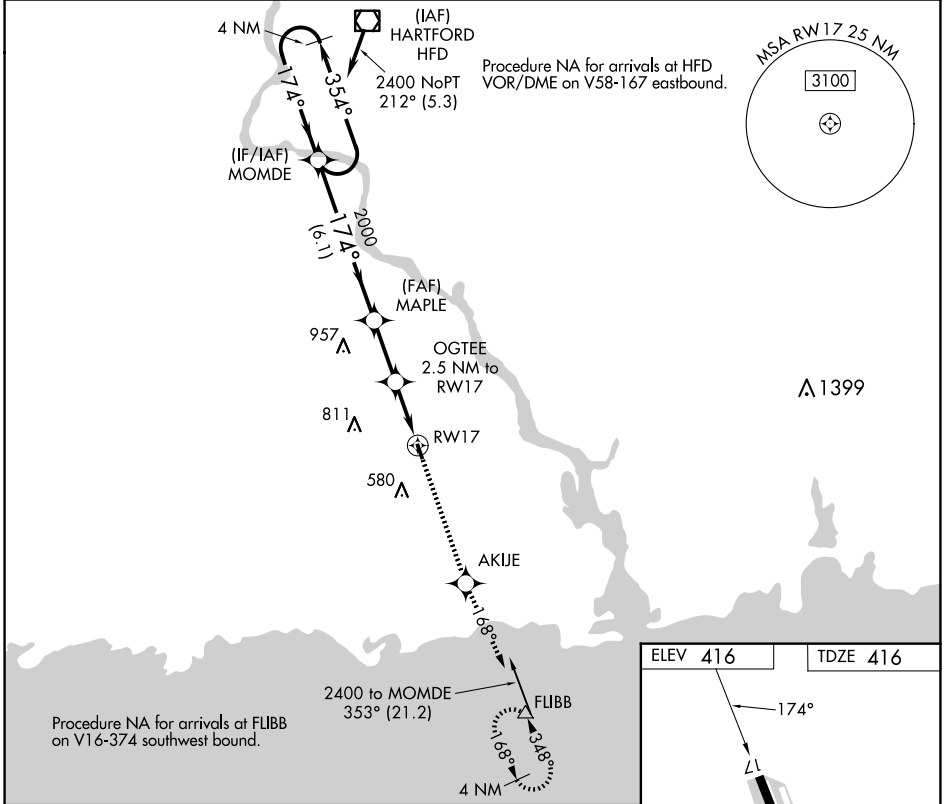
RNAV (GPS) RWY 17

CHESTER (SNC)

▼ DME/DME RNP-0.3 NA. Procedure NA at night. Helicopter visibility reduction below 1 SM NA.
▲ When local altimeter setting not received, use Meriden altimeter setting and increase all MDA 100 feet.

MISSED APPROACH: Climb to 2100 direct AKIJE and via track 168° to FLIBB and hold.

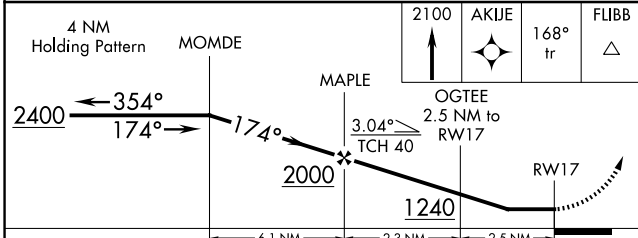
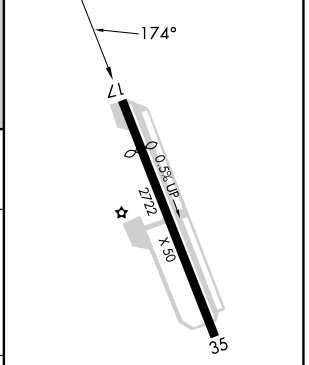
AWOS-3 118.325	NEW YORK APP CON 124.075 343.65	UNICOM 122.725 (CTAF)
--------------------------	---	---------------------------------



NE-1, 20 FEB 2025 to 20 MAR 2025

NE-1, 20 FEB 2025 to 20 MAR 2025

ELEV 416	TDZE 416
----------	----------



CATEGORY	A	B	C	D
LNVA MDA	960-1	544 (600-1)	NA	
CIRCLING	960-1 544 (600-1)	1020-1 604 (700-1)	NA	

REIL Rwy 17 and 35
MIRL Rwy 17-35