

APP CRS <b>354°</b>	Rwy Idg <b>2722</b>
	TDZE <b>416</b>
	Apt Elev <b>416</b>

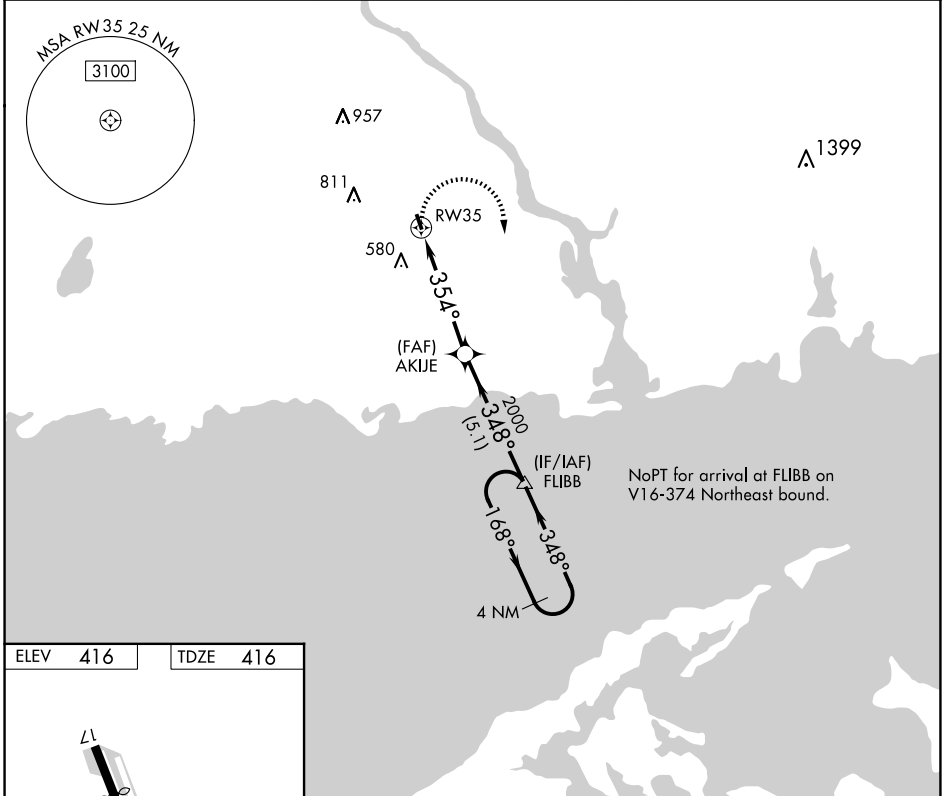
# RNAV (GPS) RWY 35

CHESTER (SNC)

**⚠** DME/DME RNP-0.3 NA. Procedure NA at night. Helicopter visibility reduction below 1 SM NA. When local altimeter setting not received, use Meriden altimeter setting and increase all MDA 100 feet.

**⚠** MISSED APPROACH: Climbing right turn to 2100 direct FLIBB and hold.

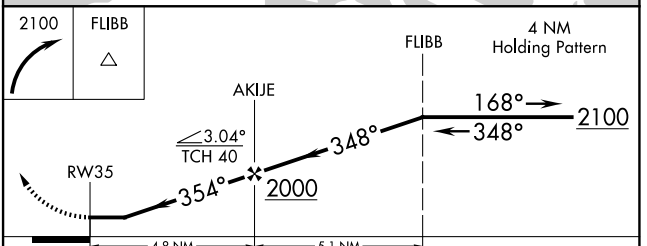
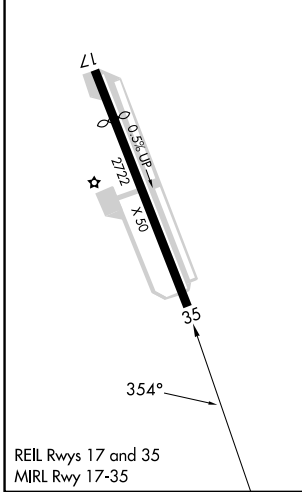
AWOS-3 <b>118.325</b>	NEW YORK APP CON <b>124.075 343.65</b>	UNICOM <b>122.725</b> (CTAF)
--------------------------	---	---------------------------------



NE-1, 20 FEB 2025 to 20 MAR 2025

NE-1, 20 FEB 2025 to 20 MAR 2025

ELEV 416	TDZE 416
----------	----------



CATEGORY	A	B	C	D
LNAV MDA	820-1	404 (500-1)	NA	
CIRCLING	920-1 504 (600-1)	1020-1 604 (700-1)	NA	