

WAAS CH <b>45837</b> <b>W14A</b>	APP CRS <b>143°</b>	Rwy Idg TDZE Apt Elev	<b>3455</b> <b>1155</b> <b>1157</b>
--	------------------------	-----------------------------	---

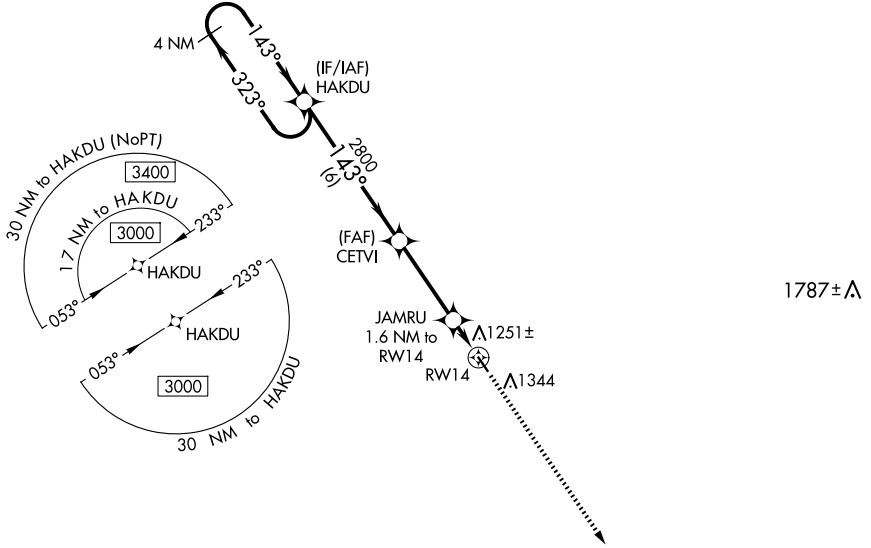
# RNAV (GPS) RWY 14

CLARION MUNI (CAV)

**⚠** For uncompensated Baro-VNAV systems, LNAV/VNAV NA below -17°C (2°F) or above 54°C (130°F). DME/DME RNP-0.3 NA. When local altimeter setting not received, use Fort Dodge altimeter setting and increase all DA 52 feet, all MDA 60 feet; increase LPV and LNAV/VNAV all Cats visibility 1/8 mile. Baro-VNAV and VDP NA when using Fort Dodge altimeter setting. Helicopter visibility reduction below 3/4 SM NA.

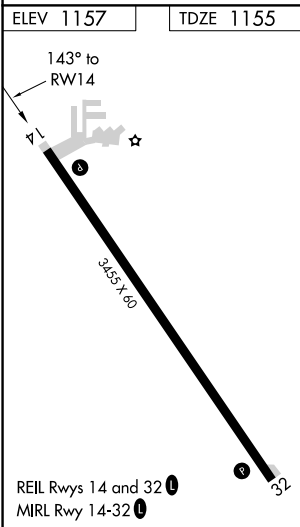
MISSED APPROACH: Climb to 3000 direct FEGNU and hold.

AWOS-3 <b>126,575</b>	MINNEAPOLIS CENTER <b>134.0 288.3</b>	UNICOM <b>122.8 (CTAF) 0</b>
--------------------------	--	---------------------------------



NC-3, 20 FEB 2025 to 20 MAR 2025

NC-3, 20 FEB 2025 to 20 MAR 2025



4 NM Holding Pattern		HAKDU		CETVI	JAMRU	3000	FEGNU
3000 ← 323°		→ 143°		2800	1.6 NM to RWY 14	↑	✧
GP 3.00°		2800		*1700		*LNAV only	
TCH 40		← 6 NM		← 3.5 NM		← 0.6 NM	
← 1 NM		← 1 NM		← 1 NM		← 1 NM	
CATEGORY	A	B	C	D			
LPV DA	1405-1	250 (300-1)			NA		
LNAV/VNAV DA	1415-1	260 (300-1)			NA		
LNAV MDA	1520-1	365 (400-1)			NA		
<b>C</b> CIRCLING	1680-1	523 (600-1)			NA		