

# COPTER RNAV (GPS) Y RWY 23

[USA]

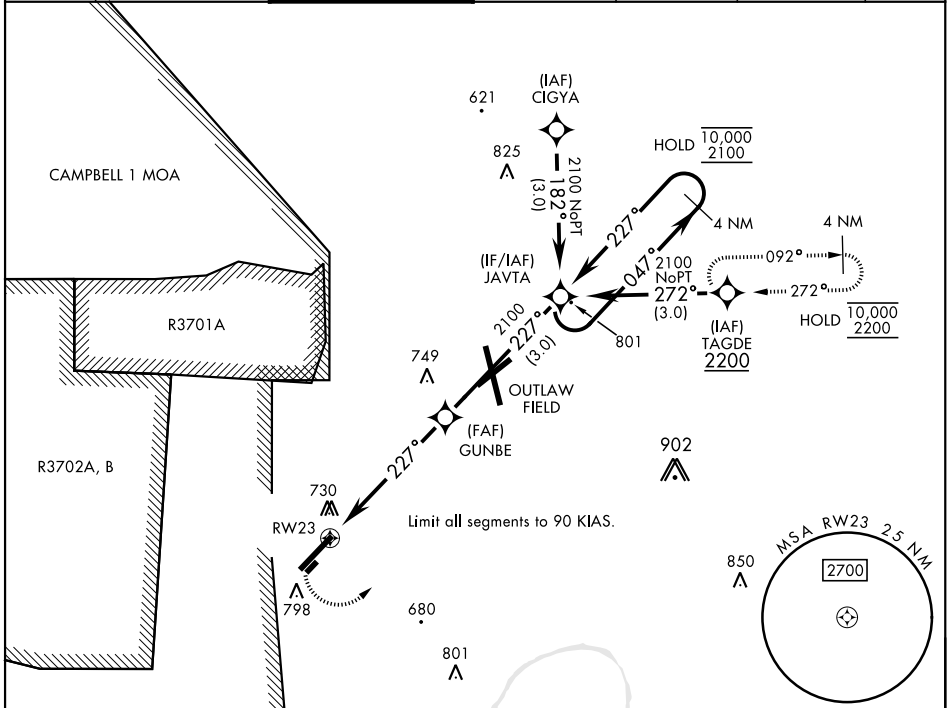
SABRE AAF (FORT CAMPBELL) (KEOD)

APCH CRS	Rwy ldg	5000
227°	THRE	573
	Arpt Elev	595

RNP APCH - GPS  
 RADAR required  
 When local altimeter setting not received, use Campbell AAF (Fort Campbell), KY altimeter setting.

MISSED APPROACH: Climbing left turn to 2200 direct TAGDE and hold.

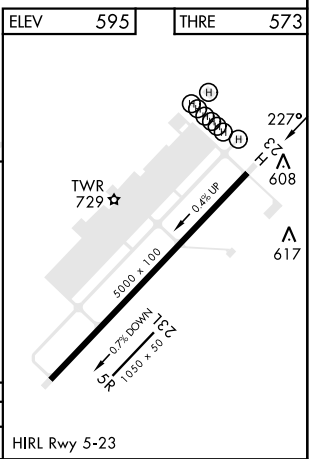
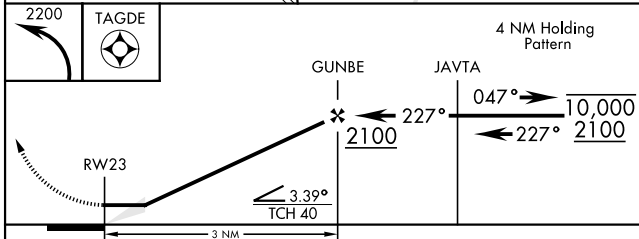
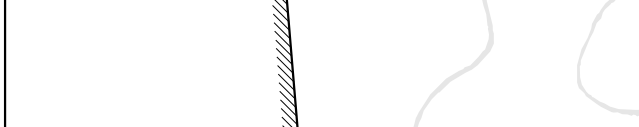
ATIS	CAMPBELL APP CON	TOWER ★	GND CON	CLNC DEL	EAGLE RADIO	ASR
306.5	134.35 307.025	124.675 (CTAF) 290.45	142.975 267.3	237.6	285.7	



SE-1, 20 FEB 2025 to 20 MAR 2025

SE-1, 20 FEB 2025 to 20 MAR 2025

ELEV	595	THRE	573
------	-----	------	-----



CATEGORY	COPTER			HIRL Rwy 5-23
LNAV MDA	1060-1	473	(500-1)	

# COPTER RNAV (GPS) Y RWY 23