

CLARKSVILLE, TENNESSEE

# RNAV (GPS) X RWY 23

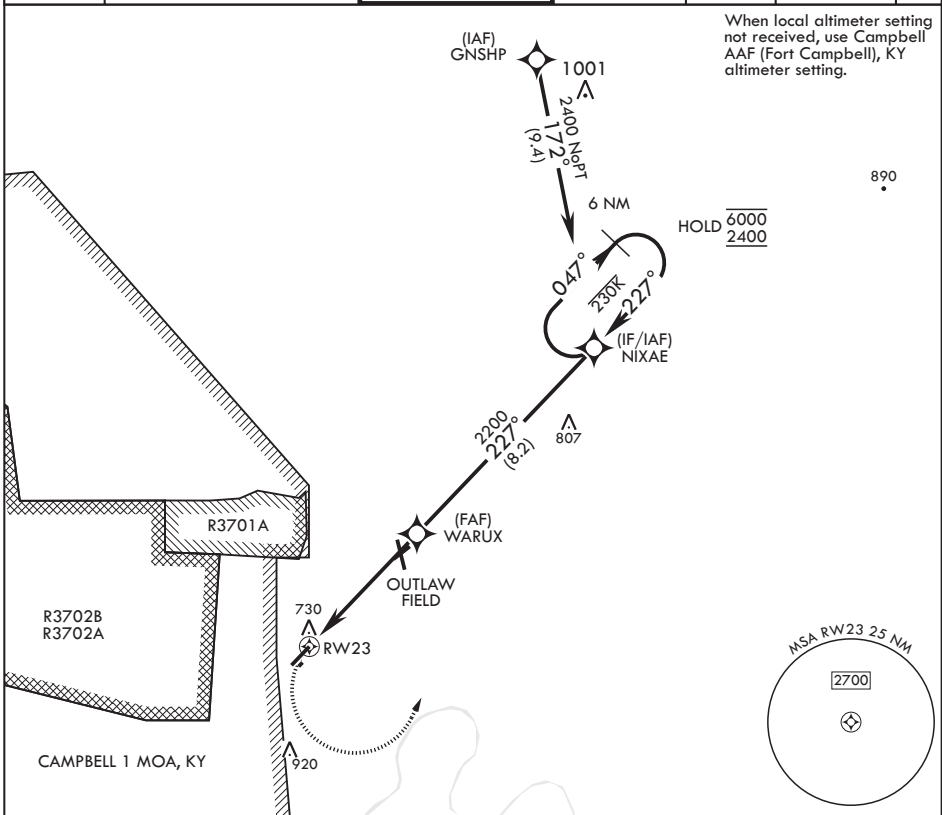
APCH CRS	Rwy Idg	5000
227°	TDZE	587
	Arprt Elev	595

AL-6373 (USA)

SABRE AAF (FORT CAMPBELL) (KEOD)

RNP APCH-GPS	MISSED APPROACH: Climbing left turn to 2400 direct NIXAE and hold.
RADAR required	
* Circling not authorized to Rwy 5R/23L.	

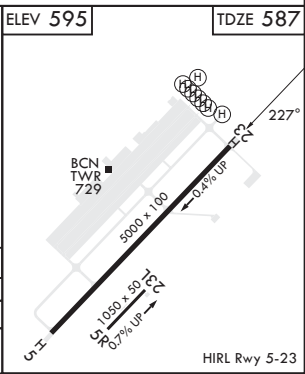
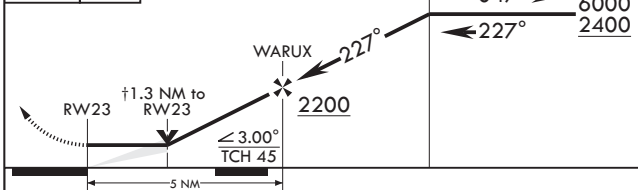
SABRE ATIS 306.5	CAMPBELL APP CON/DEP CON 134.35 307.025	TOWER * 124.675 (CTAF) 290.45	GND CON 142.975 267.3	CLNC DEL 237.6	EAGLE RADIO 285.7	ASR
---------------------	--------------------------------------------	----------------------------------	--------------------------	-------------------	----------------------	-----



SE-1, 20 FEB 2025 to 20 MAR 2025

SE-1, 20 FEB 2025 to 20 MAR 2025

2400	NIXAE	† VDP NA when using Campbell AAF (Fort Campbell) altimeter setting.	6 NM Holding Pattern	ELEV 595	TDZE 587
------	-------	---------------------------------------------------------------------	----------------------	----------	----------



CATEGORY	A		B	C		D	
LNAV MDA	1060-1	473	(500-1)	1060-1 $\frac{3}{8}$	473	(500-1 $\frac{3}{8}$ )	
CIRCLING*	1160-1	1240-1	1300-2	1300-2 $\frac{1}{4}$	565 (600-1)	645 (700-1)	705 (800-2)
			705 (800-2)	705 (800-2 $\frac{1}{4}$ )			

CLARKSVILLE, TENNESSEE

36°34'N - 87°29'W

SABRE AAF (FORT CAMPBELL) (KEOD)

Amdt 1 07SEP23

# RNAV (GPS) X RWY 23