

CLARKSVILLE, TENNESSEE

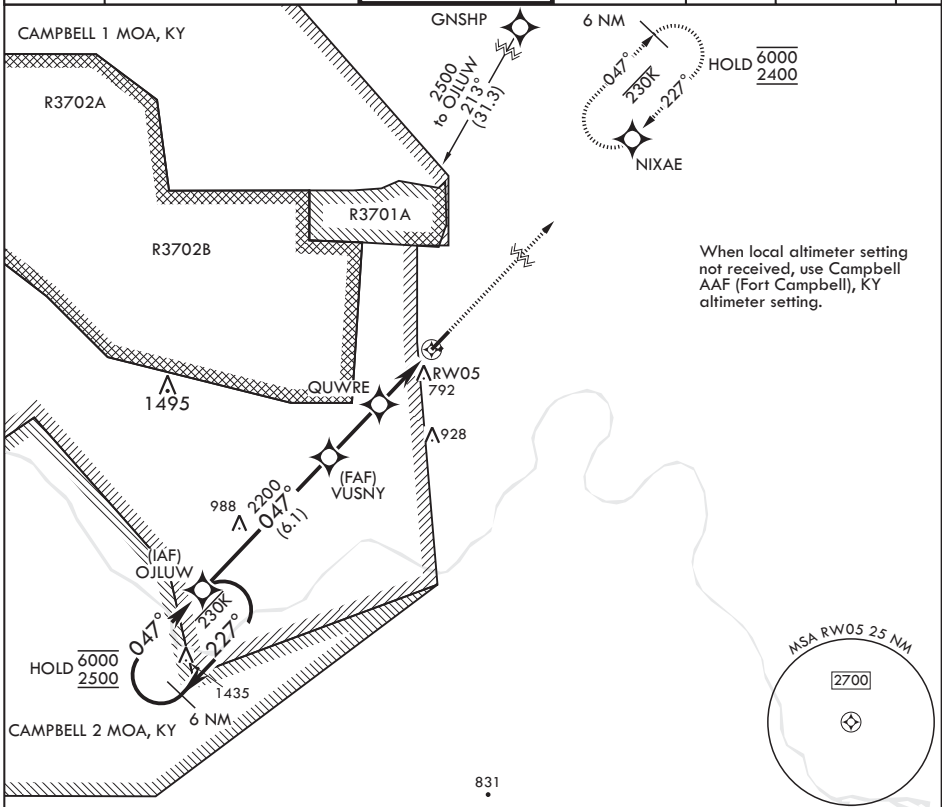
RNAV (GPS) X RWY 5

APCH CRS 047°	Rwy Idg TDZE Arprt Elev	5000 595 595
-------------------------	-------------------------------	---

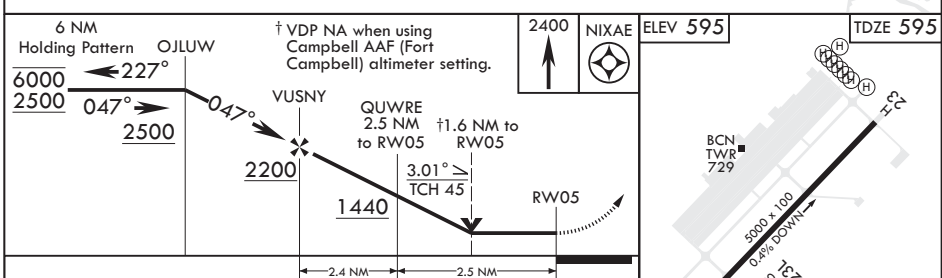
AL-6373 (USA)

SABRE AAF (FORT CAMPBELL) (KEOD)

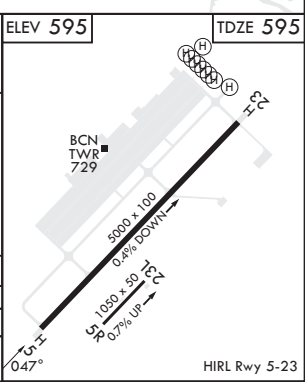
RNP APCH-GPS	MISSED APPROACH: Climb to 2400 direct NIXAE and hold.					
RADAR required						
* Circling not authorized to Rwy 05R/23L.						
SABRE ATIS 306.5	CAMPBELL APP CON/DEP CON 134.35 307.025	TOWER * 124.675 (CTAF) 290.45	GND CON 142.975 267.3	CLNC DEL 237.6	EAGLE RADIO 285.7	ASR



When local altimeter setting not received, use Campbell AAF (Fort Campbell), KY altimeter setting.



CATEGORY	A	B	C	D
LNAV MDA	1180-1 585 (600-1)	1240-1 645 (700-1)	1300-2 705 (800-2)	1300-2 705 (800-2 1/4)
CIRCLING*	1180-1 585 (600-1)	1240-1 645 (700-1)	1300-2 705 (800-2)	1300-2 705 (800-2 1/4)



SE-1, 20 FEB 2025 to 20 MAR 2025

SE-1, 20 FEB 2025 to 20 MAR 2025