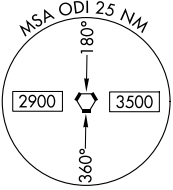


VORTAC ODI <b>117.9</b> Chan <b>126</b>	APP CRS <b>184°</b>	Rwy Idg TDZE Apt Elev <b>N/A</b> <b>N/A</b> <b>1179</b>
---	------------------------	--

**VOR-A**  
HOUSTON COUNTY (CHU)

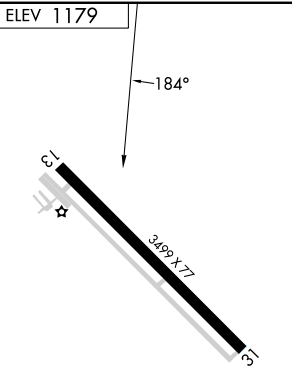
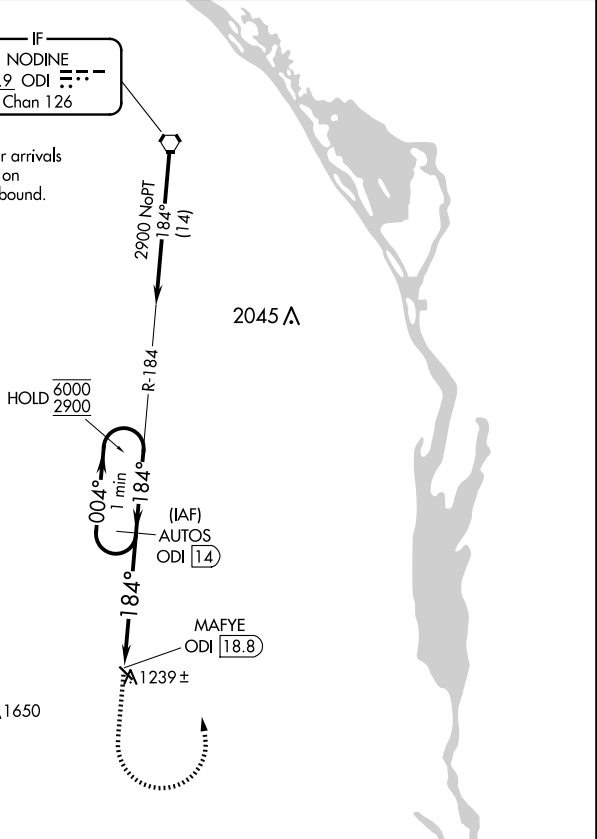
DME required.	Use La Crosse Rgnl altimeter setting. Procedure NA at night.	MISSED APPROACH: Climb to 2900 then left turn on ODI VORTAC R-184 to AUTOS/ODI 14 DME and hold.
▼ ▲ NA		

LSE ASOS <b>124.95</b>	MINNEAPOLIS CENTER <b>128.6 363.0</b>	CTAF <b>122.9 0</b>
---------------------------	--	------------------------



IF  
NODINE  
117.9 ODI  
Chan 126

Procedure NA for arrivals  
at ODI VORTAC on  
V129 northwest bound.



2900 ↑	AUTOS ODI 14	AUTOS ODI 14	One Minute Holding Pattern
	MAFYE ODI 18.8	6000 2900	
4.8 NM			
CATEGORY	A	B	C D
CIRCLING	1820-1	641 (700-1)	NA

MIRL Rwy 13-31 0

NC-1, 20 FEB 2025 to 20 MAR 2025

NC-1, 20 FEB 2025 to 20 MAR 2025