

WAAS CH <b>72739</b> <b>W21A</b>	APP CRS <b>204°</b>	Rwy Idg <b>4500</b> TDZE <b>157</b> Apt Elev <b>160</b>
--	------------------------	---

# RNAV (GPS) RWY 21

WILSON INDUSTRIAL AIR CENTER (W03)

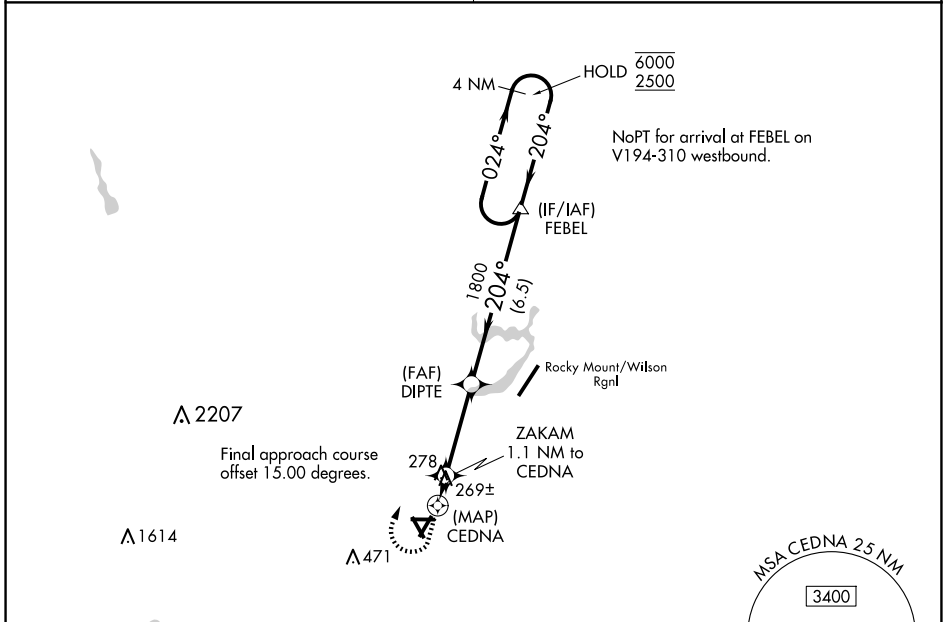
RNP APCH.

**⚠** Circling Rwy 9, 15, 27, 33 NA at night. Obtain local altimeter setting on CTAF; when not received, use Rocky Mount altimeter setting and increase all MDA 20 feet; increase LP Cats C and D visibility 1/8 SM. Rwy 21 helicopter visibility reduction below 3/4 SM NA.

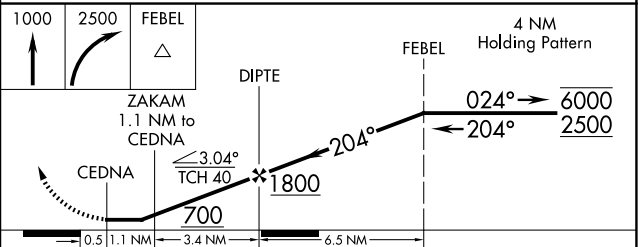
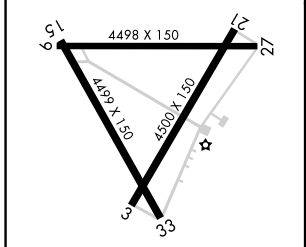
**⚠ NA**

MISSED APPROACH: Climb to 1000, then climbing right turn to 2500 direct FEBEL and hold.

WASHINGTON CENTER <b>123.85 279.65</b>	UNICOM <b>123.0 (CTAF) 0</b>
---	---------------------------------



ELEV 160	TDZE 157
----------	----------



CATEGORY	A	B	C	D
LP MDA	520-1 363 (400-1)			
LNAV MDA	540-1	383 (400-1)	540-1 1/8	383 (400-1 1/8)
<b>C</b> CIRCLING	660-1	500 (500-1)	780-1 3/4 620 (700-1 3/4)	780-2 620 (700-2)

REIL Rws 3 and 21 **0**  
MIRL Rwy 3-21 **0**

SE-2, 20 FEB 2025 to 20 MAR 2025

SE-2, 20 FEB 2025 to 20 MAR 2025