

APP CRS	Rwy Idg	4498
095°	TDZE	161
	Apt Elev	160

RNAV (GPS) RWY 9

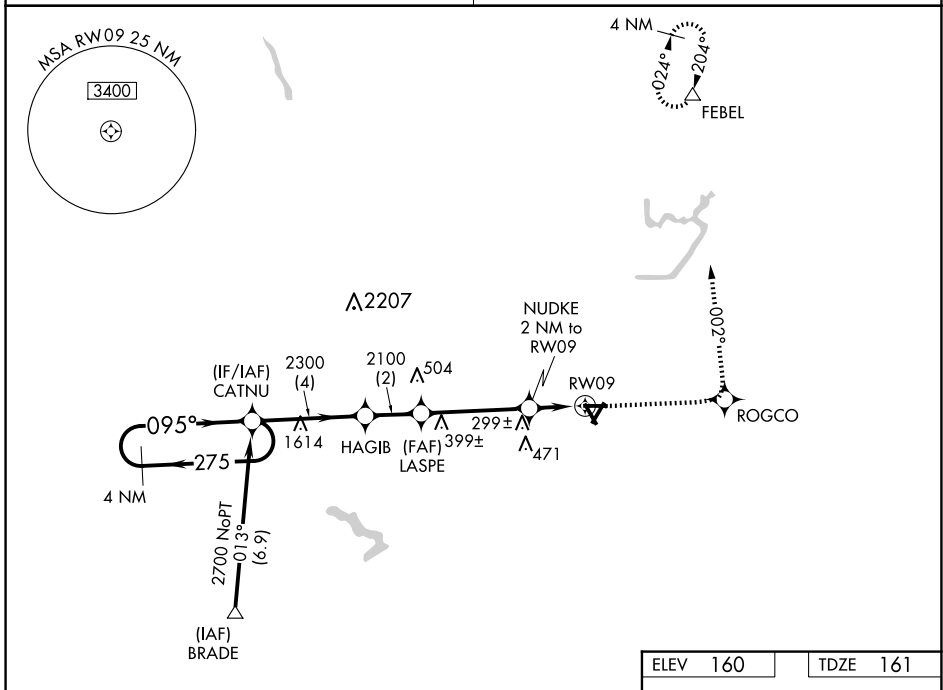
WILSON INDUSTRIAL AIR CENTER (W03)

▼ DME/DME RNP-0.3 NA. Procedure NA at night. Visibility reduction by helicopters NA. Obtain local altimeter setting on CTAF; when not received use Rocky Mount altimeter setting.

MISSED APPROACH: Climb to 2500 direct ROGCO then left turn via 002° track to FEBEL and hold.

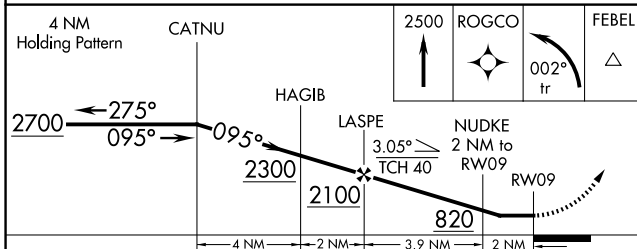
WASHINGTON CENTER
123.85 279.65

UNICOM
123.0 (CTAF) 0

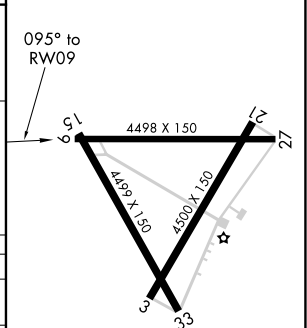


SE-2, 20 FEB 2025 to 20 MAR 2025

SE-2, 20 FEB 2025 to 20 MAR 2025



ELEV	160	TDZE	161
------	-----	------	-----



CATEGORY	A	B	C	D
RNAV MDA	560-1 399 (400-1)		560-1¼ 399 (400-1¼)	
CIRCLING	660-1	500 (500-1)	780-1¾ 620 (700-1¾)	780-2 620 (700-2)
ROCKY MOUNT ALTIMETER SETTING MINIMUMS				
RNAV MDA	580-1 419 (500-1)		580-1¼ 419 (500-1¼)	
CIRCLING	680-1	520 (600-1)	800-1¾ 640 (700-1¾)	800-2 640 (700-2)

REIL Rwy 3 and 21 **0**
MIRL Rwy 3-21 **0**