

WAAS CH 72827 W09A	APP CRS 088°	Rwy Idg TDZE Apt Elev	4218 1021 1021
--	------------------------	-----------------------------	---

RNAV (GPS) RWY 9

UNION COUNTY (MRT)

RNP APCH - GPS.

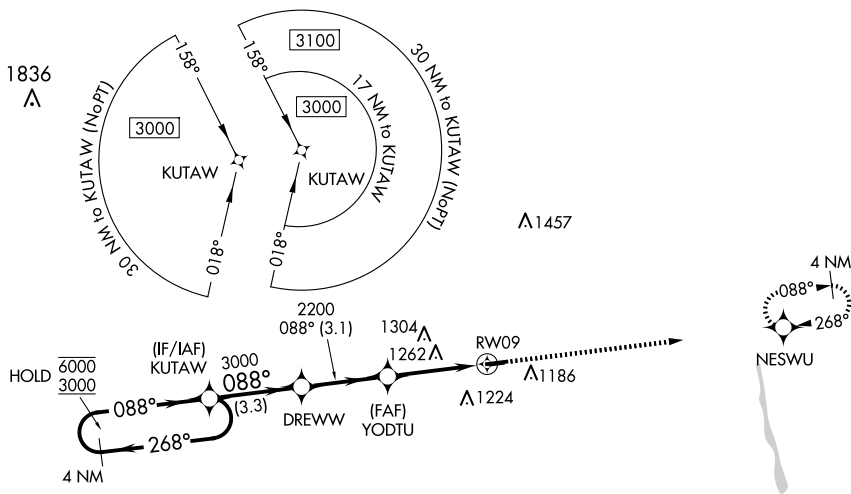
⚠ When Circling to Rwy 27 at night, operational VGSI required, remain on or above VGSI glidepath until threshold. For uncompensated Baro-VNAV systems, LNAV/VNAV NA below -17°C or above 54°C. Circling NA to Rwy 8 and 26.

MISSED APPROACH: Climb to 3000 direct NESWU and hold.

AWOS-3
119.275

COLUMBUS APP CON
125.95 317.775

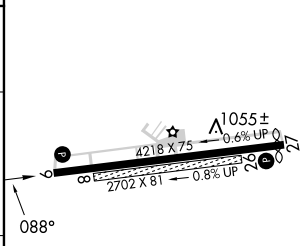
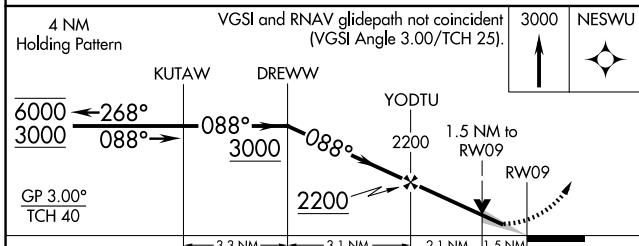
UNICOM
122.8 (CTAF)



EC-2, 20 FEB 2025 to 20 MAR 2025

EC-2, 20 FEB 2025 to 20 MAR 2025

ELEV 1021	TDZE 1021
-----------	-----------



CATEGORY	A	B	C	D
LPV DA		1285- ⁷ / ₈	264 (300- ⁷ / ₈)	
LNAV/VNAV DA		1432-1 ¹ / ₈	411 (500-1 ¹ / ₈)	
LNAV MDA	1520-1	499 (500-1)	1520-1 ³ / ₈	499 (500-1 ³ / ₈)
CIRCLING	1520-1 499 (500-1)	1540-1 519 (600-1)	1620-1 ¹ / ₂ 599 (600-1 ¹ / ₂)	1620-2 599 (600-2)

MIRL Rwy 9-27 **⓪**
REIL Rwy 9 and 27 **⓪**