

APP CRS	Rwy Idg	3619
043°	TDZE	1003
	Apt Elev	1008

RNAV (GPS) RWY 4

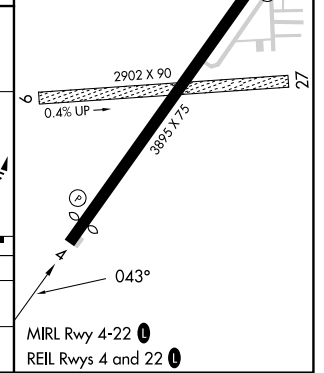
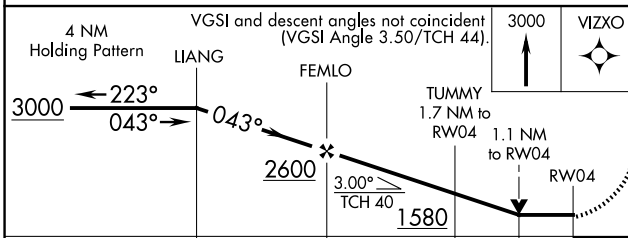
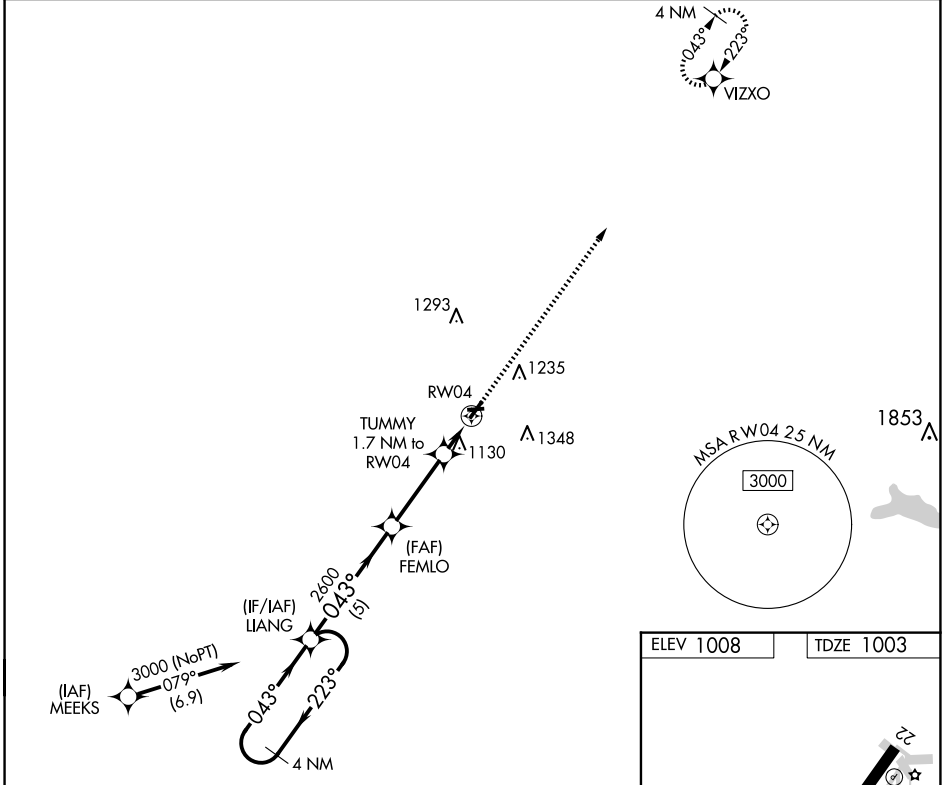
PORT BUCYRUS/CRAWFORD COUNTY (17G)

RNP APCH - GPS.

⚠ Circling NA to Rwys 9 and 27. Circling Rwy 22 NA at night. Rwy 4 helicopter visibility reduction below 3/4 SM NA. VDP NA with Mansfield altimeter setting. When local altimeter setting not received, use Mansfield altimeter setting: increase all MDA 100 feet and visibility Cat C 3/8 SM.

⚠ NA MISSED APPROACH: Climb to 3000 direct VIZXO and hold.

AWOS-3 126.625	CLEVELAND APP CON ★ 128.35 360.65	UNICOM 122.8 (CTAF) 0
--------------------------	---	---------------------------------



CATEGORY	A	B	C	D
LNVA MDA	1380-1	377 (400-1)		NA
C CIRCLING	1500-1 492 (500-1)	1540-1 532 (600-1)	1700-2 692 (700-2)	NA

EC-2, 20 FEB 2025 to 20 MAR 2025

EC-2, 20 FEB 2025 to 20 MAR 2025