

VOR BUD 109.8	APP CRS 208°	Rwy Idg TDZE Apt Elev	3895 1003 1008
-------------------------	------------------------	-----------------------------	---

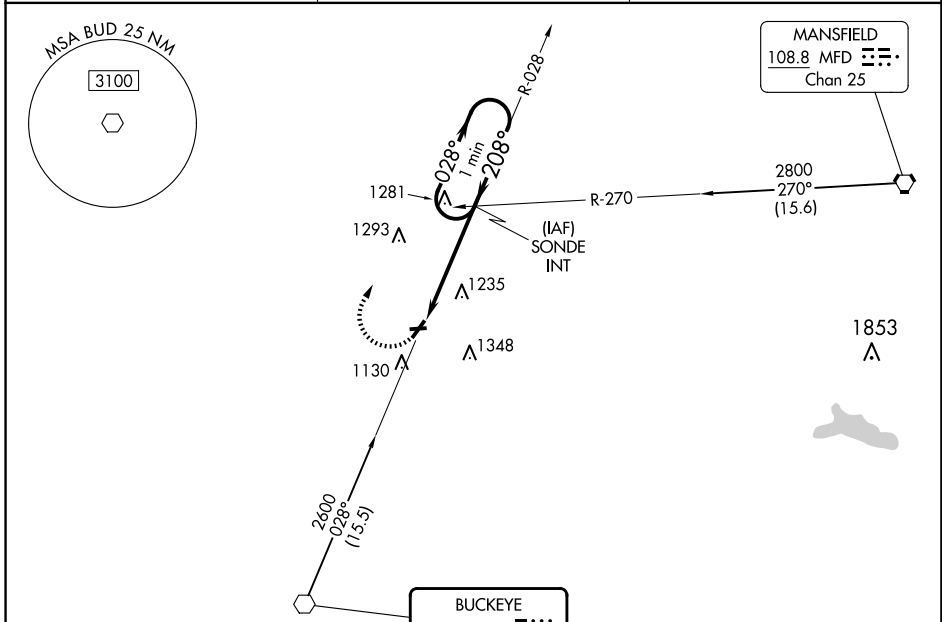
VOR RWY 22

PORT BUCYRUS/CRAWFORD COUNTY (17G)

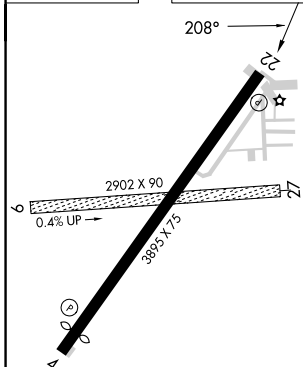
NA Circling NA to Rwys 9 and 27. Rwy 22 helicopter visibility reduction below 1 SM NA. Straight-in and Circling Rwy 22 NA at night. When local altimeter setting not received, use Mansfield altimeter setting: increase all MDA 100 feet and visibility Cats B and C ½ SM.

MISSED APPROACH: Climbing right turn to 2600 on heading 090° and on BUD VOR R-028 to SONDE INT and hold.

AWOS-3 126.625	CLEVELAND APP CON ★ 128.35 360.65	UNICOM 122.8 (CTAF)
--------------------------	---	-------------------------------



ELEV 1008	TDZE 1003
-----------	-----------

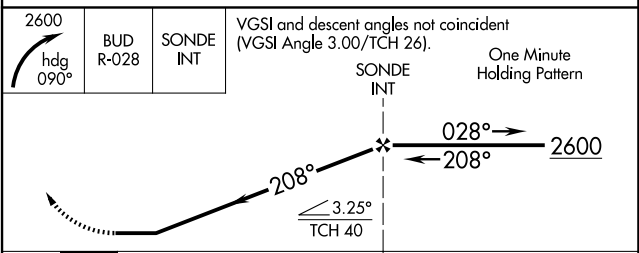


MIRL Rwy 4-22 **L**
REIL Rwys 4 and 22 **L**

FAF to MAP 4.5 NM

Knots	60	90	120	150	180
Min:Sec	4:30	3:00	2:15	1:48	1:30

RADAR REQUIRED



CATEGORY	A	B	C	D
S-22	1700-1	697 (700-1)	1700-2 697 (700-2)	NA
C CIRCLING	1700-1	692 (700-1)	1700-2 692 (700-2)	NA

VOR RWY 22

EC-2, 20 FEB 2025 to 20 MAR 2025

EC-2, 20 FEB 2025 to 20 MAR 2025