

WAAS CH <b>69431</b> <b>W05A</b>	APP CRS <b>049°</b>	Rwy Idg TDZE Apt Elev	<b>5254</b> <b>166</b> <b>166</b>
--	------------------------	-----------------------------	---

# RNAV (GPS) RWY 5

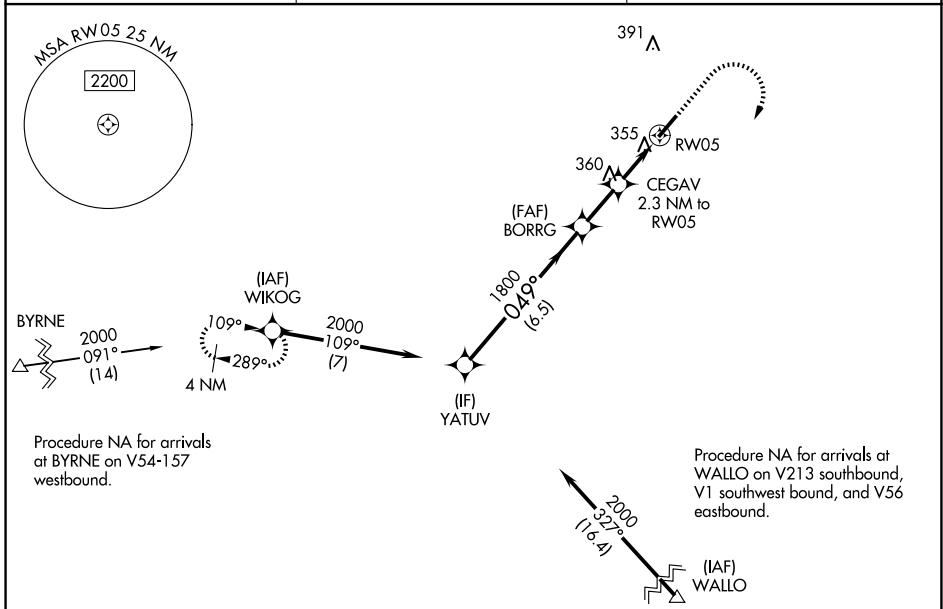
MOUNT OLIVE MUNI (W40)

RNP APCH - GPS.

**▽**  
**▲** Rwy 5 helicopter visibility reduction below 3/4 SM NA. When local altimeter setting not received, use Goldsboro altimeter setting.

MISSED APPROACH: Climb to 900 then climbing right turn to 2000 direct WIKOG and hold.

AWOS-3P <b>120.075</b>	SEYMOUR JOHNSON APP CON* <b>119.7 273.6</b>	UNICOM <b>122.8 (CTAF) 0</b>
---------------------------	--	---------------------------------

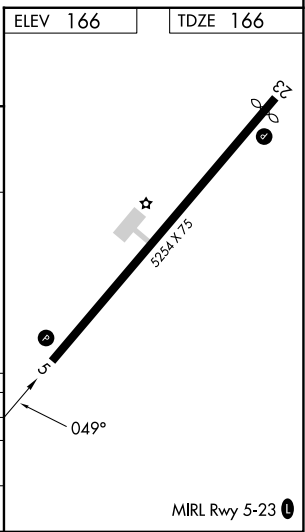
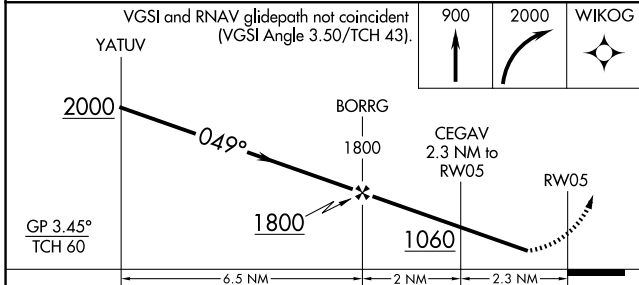


SE-2, 20 FEB 2025 to 20 MAR 2025

SE-2, 20 FEB 2025 to 20 MAR 2025

ELEV 166	TDZE 166
----------	----------

748



CATEGORY	A	B	C	D
LPV DA	625-1 3/8	459 (500-1 3/8)		NA
LNAV MDA	640-1	474 (500-1)	640-1 3/8 474 (500-1 3/8)	NA
CIRCLING	700-1	534 (600-1)	720-1 1/2 554 (600-1 1/2)	NA