

WAAS CH 99605 W07A	APP CRS 071°	Rwy Idg TDZE Apt Elev	5008 5 5
--	------------------------	-----------------------------	-------------------------------------

RNAV (GPS) RWY 7

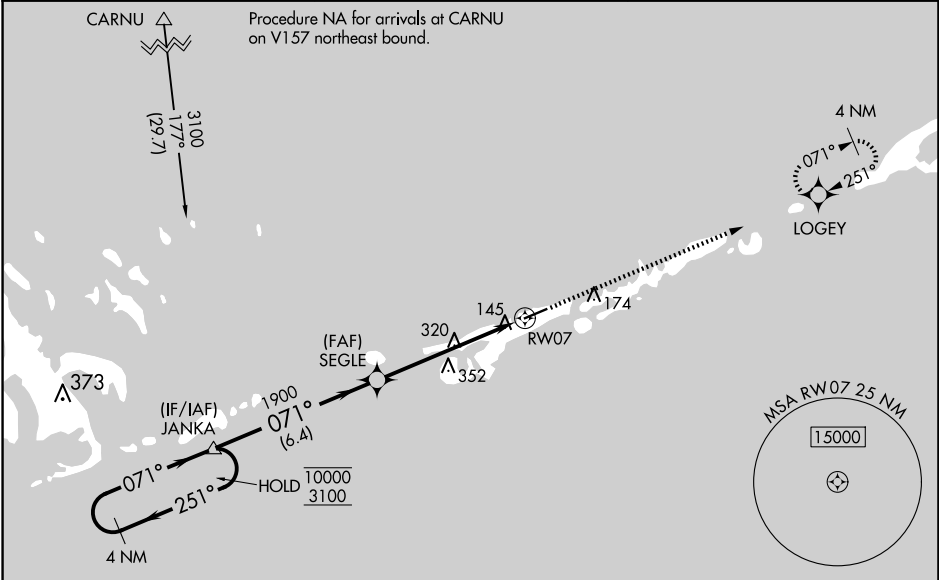
THE FLORIDA KEYS MARATHON INTL (MTH)

RNP APCH-GPS.

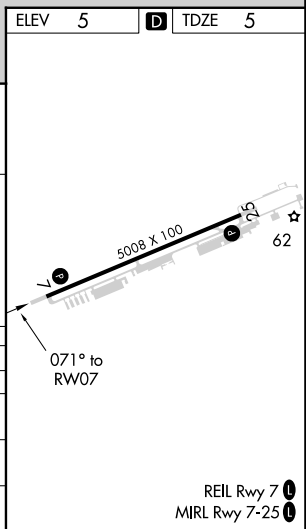
▼ Baro-VNAV and VDP NA when using Key West Intl altimeter setting. Rwy 7 helicopter visibility reduction below ¼ SM NA. For uncompensated Baro-VNAV systems, LNAV/VNAV NA below -15°C or above 54°C. When local altimeter setting not received, use Key West Intl altimeter setting: increase LPV DA to 482 feet, LNAV/VNAV DA to 534 feet, increase LPV and LNAV/VNAV all Cats visibility ¼ SM, increase all MDAs 100 feet and LNAV Cat C/D and Circling Cat C visibility ¼ SM and Circling Cat D ½ SM.

MISSED APPROACH: Climb to 2000 direct LOGEY and hold.

ASOS 135.525	MIAMI CENTER 133.5 306.9	UNICOM 122.975 (CTAF) 0
------------------------	------------------------------------	-----------------------------------



4 NM Holding Pattern		VGSi and RNAV glidepath not coincident (VGSi Angle 3.00/TCH 24).		2000	LOGEY
10000 ← 251°		JANKA		↑	✦
3100 ← 071°		SEGLE			
GP 3.00°		1900		1.7 NM to RW07	
TCH 40		1900		RW07	
		6.4 NM		4 NM	
		1.7 NM			
CATEGORY	A	B	C	D	
LPV DA		389-1 1/8	384 (400-1 1/8)		
LNAV/VNAV DA		441-1 1/4	436 (500-1 1/4)		
LNAV MDA	600-1	595 (600-1)	600-1 3/4	595 (600-1 3/4)	
CIRCLING	600-1	595 (600-1)	620-1 3/4	660-2	
			615 (700-1 3/4)	655 (700-2)	



SE-3, 20 FEB 2025 to 20 MAR 2025

SE-3, 20 FEB 2025 to 20 MAR 2025