

SW-1, 20 FEB 2025 to 20 MAR 2025

DEPARTURE ROUTE DESCRIPTION

TAKEOFF RUNWAY 25: Begin a climbing left turn as soon as practicable but no later than DER heading 206° to 7100, then direct COPER, then on depicted route to cross APRES at or above 13100, thence. . . .

. . . on (assigned) transition, maintain 15000. Expect filed altitude 10 minutes after departure.

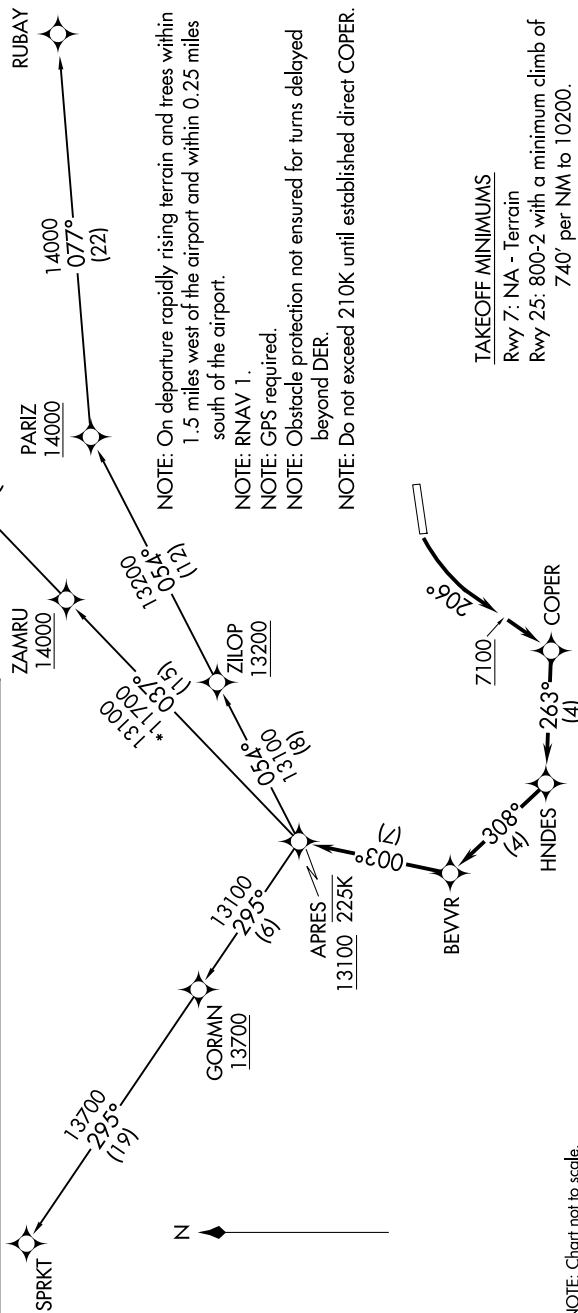
BELGN TRANSITION (BEVVR1.BELGN)

RUBAY TRANSITION (BEVVR1.RUBAY)

SPRKT TRANSITION (BEVVR1.SPRKT)

- ATIS 135.575
- CLINC DEL 124.75
- DENVER CLNC DEL 124.75
- (When tower closed)
- GND.CON
- 121.8
- EAGLE TOWER *
- 119.8
- DENVER CENTER
- 128.65 282.2

**TOP ALTITUDE:
15000**



SW-1, 20 FEB 2025 to 20 MAR 2025