

RNAV (RNP) Z RWY 25

EAGLE COUNTY RGNL (EGE)

| | | |
|-------------|----------|-------------|
| APP CRS | Rwy Idg | 8000 |
| 253° | TDZE | 6540 |
| | Apt Elev | 6547 |

RNP AR APCH-GPS, RF, MIN RNP 0.11. Authorization required. Missed approach requires RNP <1.00.

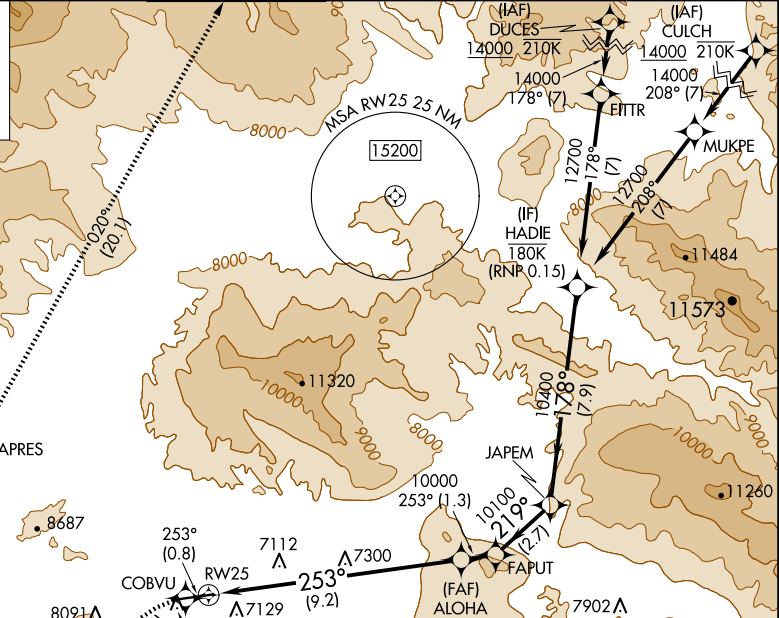
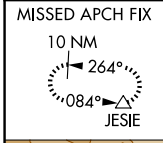
⚠ When local climeter setting not received, procedure NA. For uncompensated Baro-VNAV systems, procedure NA below -27°C or above 33°C. For inop ALS increase RNP 0.11* all visibilities to ½ SM.

MALSR

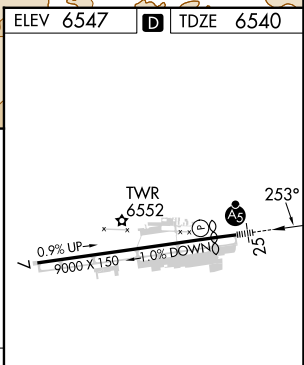
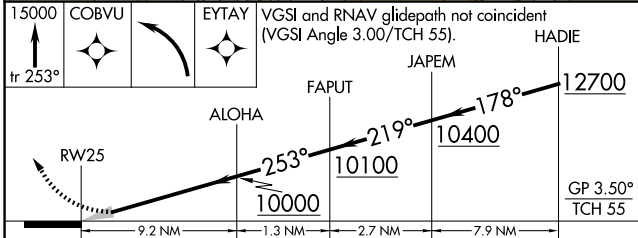
MISSED APPROACH: (Do not exceed 185K until HARNA) Climb to 15000 on the RNAV missed approach route to JESIE and hold.

*Missed approach requires minimum climb of 281 feet per NM to 9000.

| | | | | | |
|----------------|---------------------|-----------------------|--------------|---------------|--------------------------------------|
| ATIS | DENVER CENTER | EAGLE TOWER * | GND CON | CLNC DEL | DENVER CLNC DEL |
| 135.575 | 128.65 282.2 | 119.8 (CTAF) Ⓛ | 121.8 | 124.75 | 124.75 (When tower closed) |



| | | |
|-----------|----------|-----------|
| ELEV 6547 | D | TDZE 6540 |
|-----------|----------|-----------|



| | | | | |
|--------------|----|---|---------|--------------|
| CATEGORY | A | B | C | D |
| RNP 0.11 DA* | NA | | 6814-½ | 274 (300-½) |
| RNP 0.11 DA | NA | | 7181-1⅓ | 641 (700-1⅓) |

AUTHORIZATION REQUIRED

HIRL Rwy 7-25 Ⓛ

REIL Rwy 7 Ⓛ

SW-1, 20 FEB 2025 to 20 MAR 2025

SW-1, 20 FEB 2025 to 20 MAR 2025