

APP CRS <b>323°</b>	Rwy Idg TDZE Apt Elev	<b>N/A</b> <b>N/A</b> <b>6882</b>
------------------------	-----------------------------	---

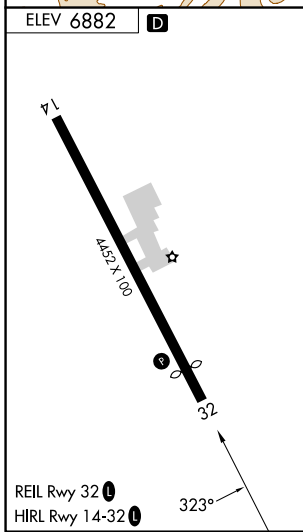
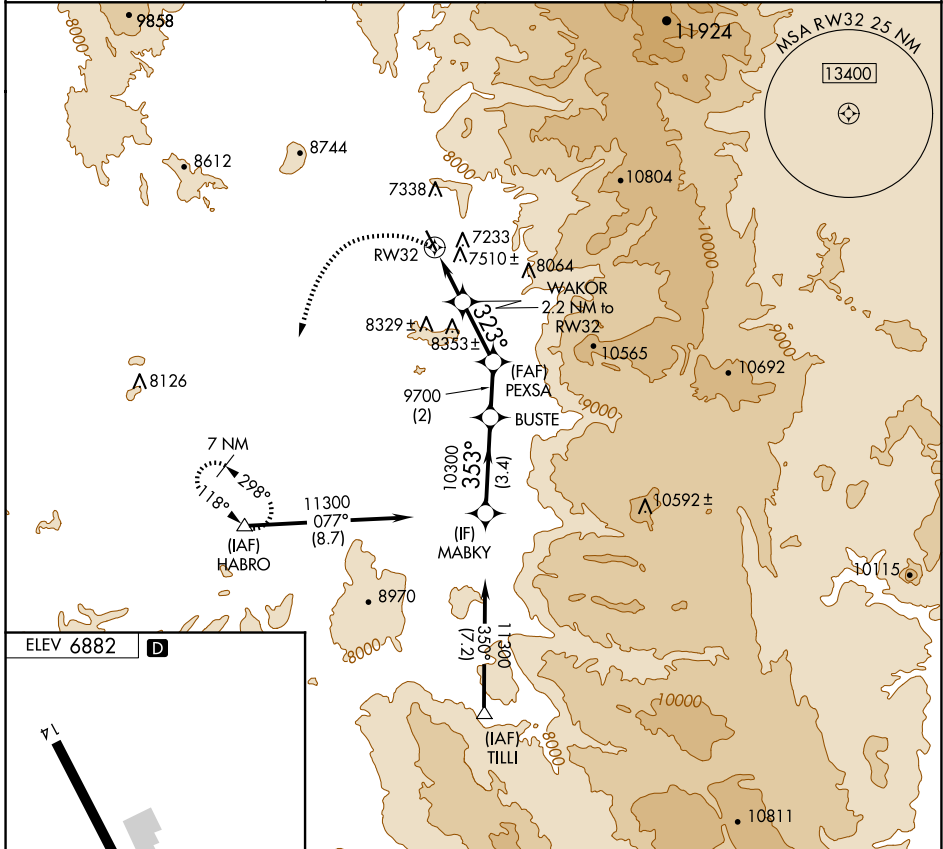
# RNAV (GPS)-E

STEAMBOAT SPRINGS/BOB ADAMS FLD (SBS)

**▼** Circling NA northeast of Rwy 14-32.  
**▲** NA  
**☒** -26°C  
 DME/DME RNP- 0.3 NA.  
 When local altimeter setting not received, use Yampa Valley altimeter setting and increase all MDA 80 feet.

MISSED APPROACH: Climbing left turn to 11300 direct HABRO and hold, continue climb-in-hold to 11300.

AWOS-3 <b>118.325</b>	DENVER CENTER <b>120.475 235.975</b>	UNICOM <b>122.8 (CTAF) 0</b>
--------------------------	---	---------------------------------



11300	HABRO	VGSI and descent angles not coincident (VGSI Angle 4.00/TCH 40).	MABKY
			BUSTE
		WAKOR 2.2 NM to RW32	PEXSA
			BUSTE
			11300
			10300
			9700
			8740
			Procedure Turn NA
			2.2 NM
			2.4 NM
			2 NM
			3.4 NM
CATEGORY	A	B	C
	8140-1¼	8140-1½	NA
	1258 (1300-1¼)	1258 (1300-1½)	
<b>☑</b> CIRCLING			NA

SW-1, 20 FEB 2025 to 20 MAR 2025

SW-1, 20 FEB 2025 to 20 MAR 2025