

# RNAV (GPS) Z RWY 32

STEAMBOAT SPRINGS/BOB ADAMS FLD (SBS)

APP CRS	Rwy Idg	<b>3852</b>
<b>340°</b>	TDZE	<b>6881</b>
	Apt Elev	<b>6882</b>

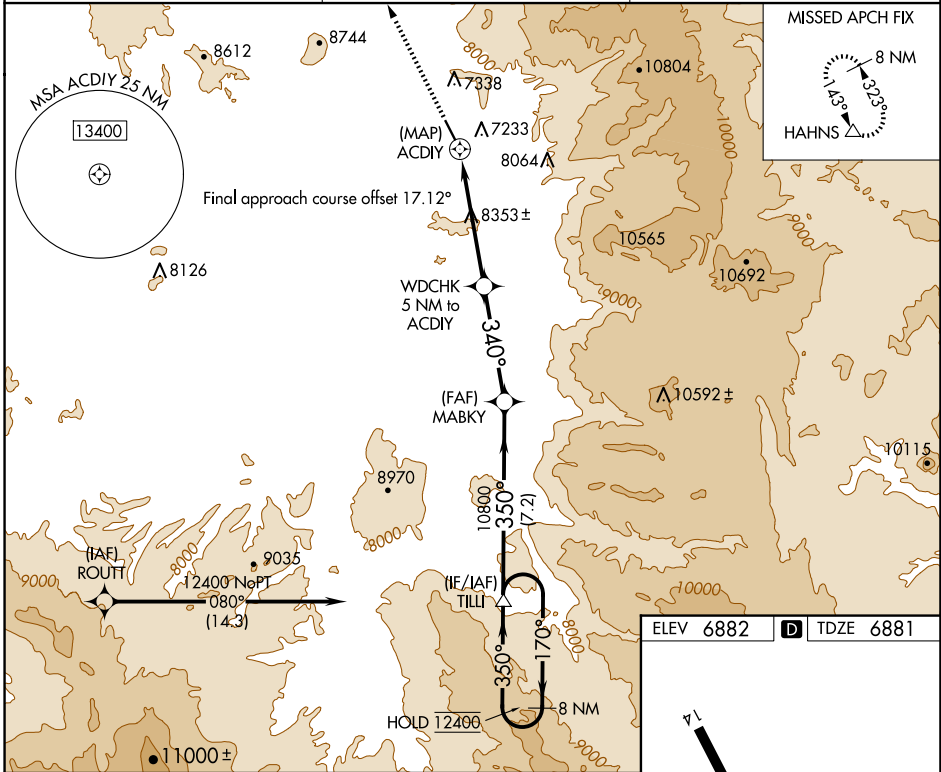
RNP APCH - GPS.

**⚠** Circling NA northeast of Rwy 14-32. Rwy 32 helicopter visibility reduction below 1 SM NA. Rwy 32 Straight-in minimums NA at night. Circling Rwy 32 NA at night.

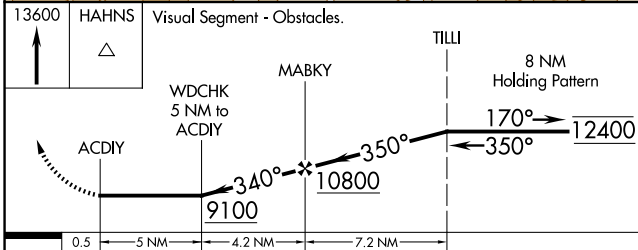
**⚠** -26°C

MISSED APPROACH: Climb to 13600 direct HAHNS and hold, continue climb-in-hold to 13600.

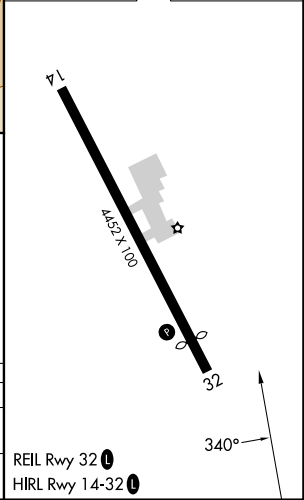
AWOS-3 <b>118.325</b>	DENVER CENTER <b>120.475 235.975</b>	UNICOM <b>122.8 (CTAF)</b>
--------------------------	---	-------------------------------



ELEV 6882	<b>D</b> TDZE 6881
-----------	--------------------



CATEGORY	A	B	C	D
LNVA MDA	9100-1¼ 2219 (2300-1¼)	9100-1½ 2219 (2300-1½)		NA
<b>C</b> CIRCLING	9100-1¼ 2218 (2300-1¼)	9100-1½ 2218 (2300-1½)		NA



SW-1, 20 FEB 2025 to 20 MAR 2025

SW-1, 20 FEB 2025 to 20 MAR 2025