

|  |                        |   |
|--|------------------------|---|
| WAAS<br>CH <b>78131</b><br><b>W16A</b> | APP CRS<br><b>164°</b> | Rwy Idg<br>TDZE <b>1206</b><br>Apt Elev <b>1206</b> |
|--|------------------------|---|

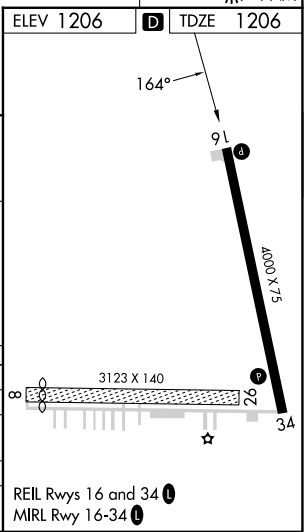
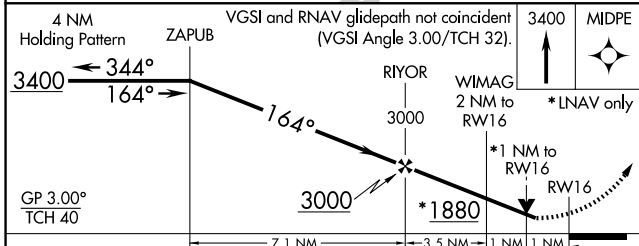
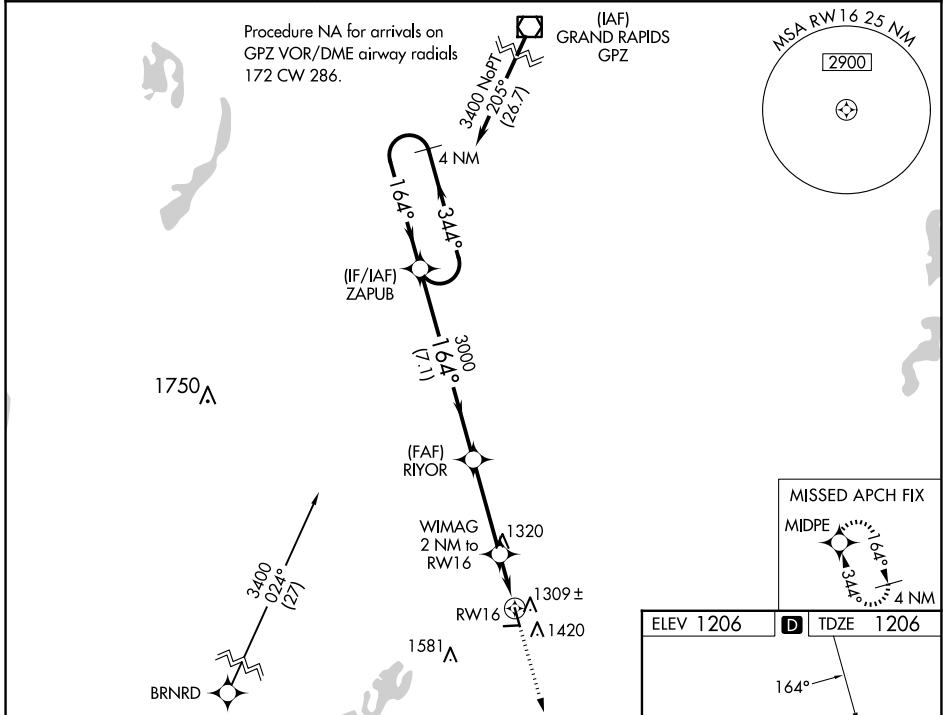
# RNAV (GPS) RWY 16

AITKIN MUNI/STEVE KURTZ FLD (AIT)

**⚠** For uncompensated Baro-VNAV systems, LNAV/VNAV NA below -17°C (2°F) or above 54°C (130°F).  
**⚠** Baro-VNAV and VDP NA when using Mc Gregor altimeter setting. DME/DME RNP-0.3 NA. When local altimeter setting not received; use Mc Gregor altimeter setting and increase all DA and MDA 40 feet; increase LPV all Cats visibilities ¼ SM, LNAV/VNAV all Cats and LNAV Cat C visibilities ½ SM. Circling NA to Rwys 8 and 26. Rwy 16 helicopter visibility reduction below ¾ SM NA.

MISSED APPROACH: Climb to 3400 direct MIDPE and hold.

|                          |   |                                  |
|--------------------------|---|----------------------------------|
| AWOS-3<br><b>118.675</b> | MINNEAPOLIS CENTER<br><b>118.05 239.0</b> | UNICOM<br><b>123.05 (CTAF) 0</b> |
|--------------------------|---|----------------------------------|



| CATEGORY     | A        | B             | C                     | D  |
|--------------|----------|---------------|-----------------------|----|
| LPV DA       | 1518-1   | 312 (400-1)   |                       | NA |
| LNAV/VNAV DA | 1607-1 ¾ | 401 (500-1 ¾) |                       | NA |
| LNAV MDA     | 1560-1   | 354 (400-1)   |                       | NA |
| CIRCLING     | 1780-1   | 574 (600-1)   | 1900-2<br>694 (700-2) | NA |

NC-1, 20 FEB 2025 to 20 MAR 2025

NC-1, 20 FEB 2025 to 20 MAR 2025